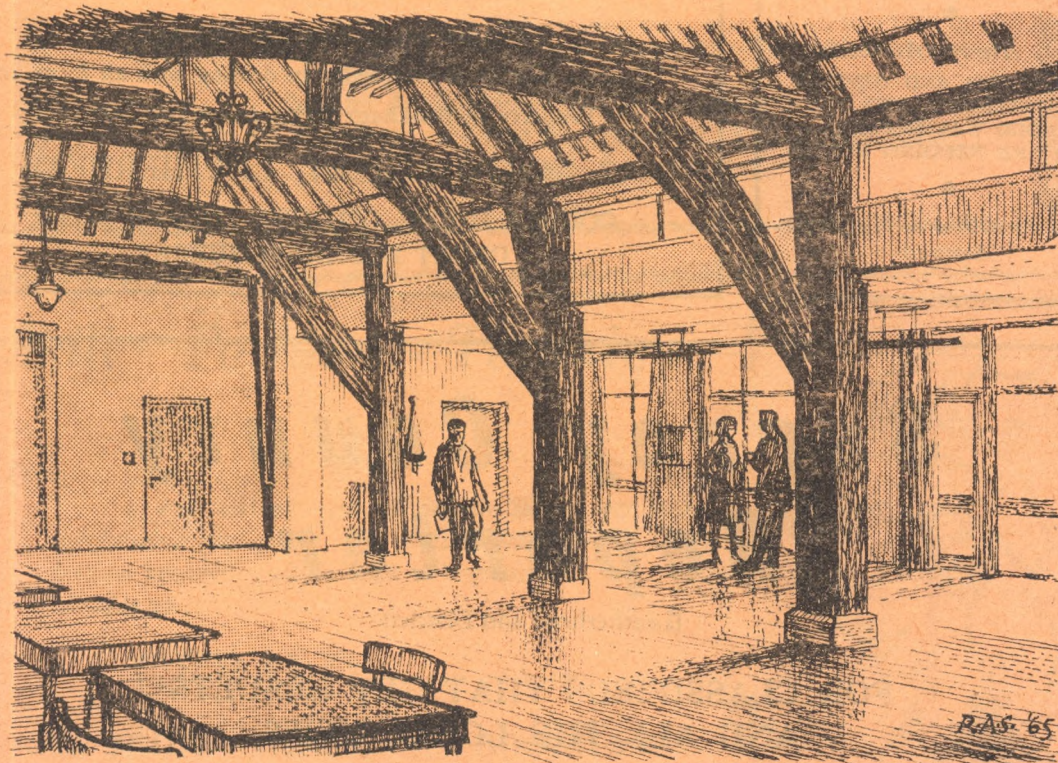


The Bookhams Bulletin

Quarterly Journal of the Bookham Community Association



LEATHERHEAD & DISTRICT
LOCAL HISTORY SOCIETY

No 130

December 1966

33rd Year

**BOOKHAM
PET SHOP**

**BARDOLIN HOUSE
CHURCH ROAD
GREAT BOOKHAM
Tel. BOOKHAM 4928**

●
Pets Always Available
MEALWORMS AND GENTLES
TROPICAL AND
COLD WATER FISH
POTS AND BEDDING PLANTS

●
*Pets' Health and Hygiene
Assured*

Office Hours: 9 a.m.—6 p.m.

Tel.: Bookham 3181 and 4390, Leatherhead 4101/2

PORTER & SMART

**SURVEYORS, AUCTIONEERS, HOUSE, LAND
AND ESTATE AGENTS**

Valuation for Probate and all purposes.

Experts with local knowledge in dealing with all forms of
Property in Bookham and surrounding District

**7 NORTH STREET, LEATHERHEAD
CORNER HOUSE, OPPOSITE CHURCH ROAD,
GREAT BOOKHAM, SURREY**

***Surrey County
Reporter***

(Leatherhead and District)

**FOR CLASSIFIEDS THAT GET RESULTS
AND ALL THE LOCAL NEWS**

EVERY THURSDAY

Head Office: CROYDON ADVERTISER LTD., 36 HIGH STREET, CROYDON 2692

Leatherhead Urban District Council

**INVEST IN LEATHERHEAD
LOCAL BONDS**

**7 PER
CENT
PER ANNUM**

Trustee Security

No Costs to Investors

Send for Application Form and Particulars from
THE TREASURER, COUNCIL OFFICES, LEATHERHEAD
(Telephone: Leatherhead 2266 / Ext. 2)

Skill - Fashion - Technique

Take . . .

. . . a well trained staff, a superb salon, the latest
hairdressing equipment and a flair for service. Add
fashion knowledge and a dash of ingenuity
—it all adds up to . .

GERALD HAIR STYLIST

5a HIGH STREET :: BOOKHAM

Tel. 2526



H. R. RICHMOND LTD. MOTOR COACHES

37 SOUTH STREET
EPSOM

Phone: 25252

Departures from the Crown Hotel:

Three-Day Inclusive Coach Tours
Express Services to the South Coast
Day and Afternoon Tours of Interest
Private Hire for all Occasions
(23, 29, 37, 41 and 52-Seater Coaches)

*

Local Agents:

THRUSH, NEWSAGENT, LOWER ROAD
LYONS, NEWSAGENTS, GUILDFORD ROAD

M. A. Perry

DRAPER

Noted for Baby Linen
Hosiery — Lingerie

Stockists for
Ballito & Cook's of St. Paul's
and Templeton's. Ladyship
and P.B. wools

High Street Bookham

Telephone 2509

TIMBER & BUILDERS
MERCHANT

P. M. CLACK
& SON LTD.
LEATHERHEAD ROAD

Tel.: Bookham 246

Timber, Cement, Sand,
Ballast, Lime, Glass,
Ironmongery, Chlorate
of Soda, Plywood and
Hardboard, Roof Felt

Supplied in any Quantity

Plumbing and Decorating
Materials Stocked

FRANCES * * * * *

From Madam Dee, late of New Bond Street, W.

LADIES' OUTFITTERS

Furs Cleaned and
Remodelled up-to-date

Specialists in O.S. Gowns
Aristoc, Kaysor Bondor
and other makes of
Stockings.

Local Sole Agents for
PULL FRONT CORSETS
We Specialise in all sizes
LINGERIE AND GOWNS
SPORTSWEAR, latest styles
MODEL SKIRTS

CHURCH ROAD, BOOKHAM
Tel. BOOKHAM 2645

THE SPINNEY SCHOOL

NURSERY AND PREPARATORY FOR BOYS AND
GIRLS FROM 3 TO 11 YEARS.

Recognised by the Ministry of Education.

Modern Froebel method of teaching.

Small classes and individual work. Large rooms set in
spacious grounds. On 418 bus route.

School car available.

Write for prospectus to:

The Principal, The Spinney School,
EASTWICK DRIVE, GREAT BOOKHAM

Tel.: Bookham 84.

TEL.: BOOKHAM 2980

J. CHITTY & Son

High-Class

Butchers

& Poulterers

THE GROVE
BOOKHAM

and at Dorking

Buying a Dog?

PEDIGREE

Longhaired Dachshunds

Puppies of various ages for
sale from prizewinning parents.
Healthy, affectionate, sweet
temperaments.

Used to children

DOGS AT STUD

Mrs. R. Slimmonds,
Jack and Jill Nursery,
214a Lower Road,
Great Bookham
Phone Bookham 4367

GOBLIN

PRODUCTS
MAKE
LIGHT WORK
FOR
LADIES

Apply: Mr. C. A. Robins
GOBLIN (B.V.C.) LTD., GOBLIN WORKS
ERMYN WAY, LEATHERHEAD. TEL. ASHTEAD 6121

*For your weekend
relaxation . . .*

The Surrey Advertiser

*Your County Paper
with all the local news
plus 2,000 small
advertisements*

Every Saturday

Fivepence

J. A. ZEBEDEE

37 HIGH STREET

Gt. BOOKHAM

Phone: Bookham 2871

Confectioner

Tobacconist

Stationer

& Toys

Lyons Ice Cream

B. C. A.

*

AUTUMN

*** DANCE ***

At Barn Hall

Saturday

October 31st

7.45 p.m.

*

10s. 6d.

(Including Refreshments)

Music by . . .

PERCIVAL GRIFFITH

The Bookhams Bulletin

Quarterly Journal of the Bookham Community Association

No 130

December 1966

33rd Year

EDITORIAL

It would seem necessary from time to time to define the purpose and scope of the Bookham Community Association. It exists to bring together local organisations, the local authorities and local residents to assess and seek the provision of facilities for social, recreational and educational needs of the neighbourhood, now, and in the future.

In pursuance of this aim the Community Association itself manages the Barn Hall which is used by its open clubs, by the old people and by youth, and by many local organisations. The Hall is not big enough to meet all requirements and the Association is trying, by further building, to provide more extensive facilities. It edits and distributes the Bookham Bulletin so that everybody may know the activities of the village as a whole. It organises an annual Village Day and Week to give publicity to what is happening in the district. It makes possible the continuance of the widely-patronised Polesden Lacey Open-Air Theatre (incidentally it was started by the B.C.A.) by serving on the Trust's Advisory Committee and supplying much voluntary help.

Although the State and the Local Authorities provide many more facilities than in the past, there are still many services which, in the main, depend on voluntary effort, and it is in this sphere that the Community Association functions. It seeks continuously to make Bookham a place in which it is good to live. The Association recognises that not everybody can give of their leisure to participate actively in its work, but most people could afford a small donation for such a worthy cause.

Do not hesitate. Fill in the enrolment form below and forward with your subscription to the Membership Secretary: Mrs. B. Oldershaw, 99 Little Bookham Street. An alternative, which is more advantageous to us, is the subscription by covenant and Mr. A. G. Medway, 35 The Garstons (Tel. Bookham 4967) will be happy to supply details.

I enclose a subscription of.....
for membership of the B.C.A.

Name

Address

ROUND THE VILLAGE

The Camera Club meets on Thursday evenings in the Bookham County Junior School. It started its 1966/67 season in

September with members showing their holiday colour slides and chatting informally. It appeared that members had visited most parts of the British Isles and Europe!

Further meetings have included a visit to the studio of Sir George Pollock, at Westcott, to learn about vitrographs. These are abstract colour photographs which originate from cullets—lumps of waste glass. Pictures are built up by coloured light which is reflected and refracted by surface blemishes and inclusions in the glass. The fascinating results obtainable are illustrated in a selection of colour transparencies.

In October, Mr. Cyril Peckham, F.R.P.S., gave a lecture on aerial photography, and described the techniques and hazards of photographing one aircraft from another flying nearby. One slide showed the lecturer, camera in hand, leaning out at full stretch from the cockpit of a Hawker Hartbiplane. Experiences of photographing Sea Venoms and Sea Furys, taking off from, and landing on an aircraft carrier, were also described. The lecture was illustrated by a large number of impressive slides showing aircraft in various attitudes of flight.

Showrooms:

1 DORKING ROAD
EPSOM 3901



Works:

18 WATERLOO ROAD
EPSOM 5257

THE FRIENDLY AGENTS

NEW

AUSTIN
MORRIS
TRIUMPH
M.G
RILEY
RENAULT
DISTRIBUTORS

CITROEN
AREA AGENTS

HILLMAN

**USED
CARS**

A GOOD SELECTION ALWAYS
IN STOCK

PART EXCHANGES

LOW INTEREST

HIRE PURCHASE

PRIVATELY FINANCED

FACTORY TRAINED MECHANICS

CRYPTON MOTORSCOPE

For 'AFTER-SALES' Service

DRIVING LESSONS

ROYAL AUTOMOBILE CLUB APPROVED INSTRUCTORS

"NERVY PUPIL SPECIALISTS"

Print competitions are always a favourite programme item, and we are looking forward to meeting Weybridge Camera Club on January 26th, and Dorking and Capel Clubs on February 27th. These competitions always spur us on to improve the standard of our work.

Practical evenings on January 19th and February 23rd will probably result in the school hall being filled with a tangle of flood lamps, cables and tripods, as well as the subject material being shot.

The highlight of our year is the Annual Exhibition in the Barn Hall which will be held on Saturday, April 29th. However, it is a little early to discuss this as most of the prints to be displayed have yet to be taken.

The Club extends a welcome to new members.

J. A. C.

The Bookham Ranger Company started in a small way in October of last year. In February of this year Mrs. Kelbie became captain and the membership has doubled. There are now 12 members, of which six are enrolled Rangers. They hope to have their first service star by Christmas. So Bookham's first Ranger Company has got off to a good start. It meets in the Congregational Hall every second Monday at 8 p.m., and caters for the over sixteens. Particulars may be obtained from Mrs. E. B. Kelbie, 30 Downsway, Tel. Bookham 4772.

Bookham Youth Club has an enthusiastic membership of over 100 young people, with an average

weekly attendance at the Barn Hall on Mondays of 80 and more. Members of the adult Management Committee are present, some on every Monday, some on a rota system. We are asked to put an appeal through the Bulletin for more offers of help, especially from men, so that a wider rota can be made. It is thought that there may well be parents of the young people who would be willing to take on an occasional evening. All offers of assistance should be made to the new Chairman, Mr. J. Stemp, 58 Whiteway, Tel. Bookham 4143.

Bookham Football Club. It has become customary for most clubs to arrange social events for their members, over and above the special interest for which they join. The Football Club is no exception. It is planning a number of theatre trips and also coach parties to international football matches at Wembley if there is sufficient demand. Its most ambitious project is a five-day Belgium tour in March.

Bookham Dramatic Society is having a busy season with three productions in rehearsal. "A Letter from the General," the Society's November play was a departure from the previous policy of comedies. The audiences' obvious appreciation of this more serious play will encourage us to present a wider range of plays in the future.

We are also occupied at the moment with preparing an entry

for the Betchworth Drama Festival, the first round of which is to be held at the Barn Theatre, Oxted, during the week beginning February 20th. The play we have chosen is "The Happy Journey," by Thornton Wilder.

Our third venture is a production in conjunction with the Bookham Scouts in order to raise money for a new Scout hut. This play is a comedy by Arnold Hellsby called "The Camel's Back," and there will be two performances in Church House on January 13th and 14th.

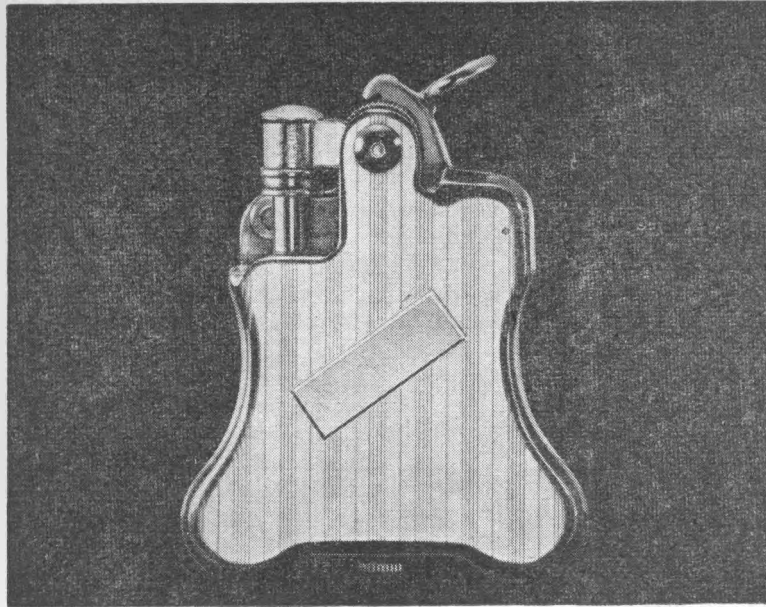
The Society has expanded considerably in the last year, but would still welcome new members, especially men, who should get in touch with the secretary. The larger our membership, the greater will be the range of plays we can do. So often we have to reject a play because we cannot cast the male parts.

Our spring production will be "Haul for the Shore," a witty and well-loved comedy. Please make a note—Church House, April 20th, 21st and 22nd.

A. L.

The Garden Society had to hold its Autumn Show, as well as its Summer Show, at the Barn Hall, owing to unforeseen difficulties at the Fetcham Village Hall. They are now faced with a problem for the future in so far as the entries and attendance exceeded substantially those previously obtained at Fetcham.

Coming meetings are: A lec-



It all started with the Banjo (as illustrated) in 1927
 This was the first automatic lighter the world had ever seen. It made 'lighting up' a good deal easier. It also led to the development of our Varaflame gas lighter, the most advanced the world has known. We've been in the making-it-easier business ever since. Not just with lighters. With anything that can stand improving, revamping or just plain old-fashioned inventing.

Today, Ronson does a lot more than light cigarettes.
 We make top-rated electric razors for men and for women . . . a great range of hairdryers . . . an automatic toothbrush . . . 'Oily Bird' household oil. And lots of other interesting things.

'Who knows where it will end?' After all, Ronson started out with one modest ambition: to improve on the match.



RONSON PRODUCTS LIMITED, LEATHERHEAD, SURREY

Make a note to phone or call . . .

V.I.P.

OFFICE ACCESSORIES CO.
 for TYPEWRITERS and ALL
 OFFICE EQUIPMENT

Stockists for
 Quality . . .
 Carbons · Ribbons
 Duplicating Supplies
 Photographic Supplies

BURPHAM HOUSE
HIGH STREET
BOOKHAM
Bookham 4848

Nothing too much trouble
 You name it, we get it

DRY CLEANERS !

Tel. Bookham 4815

—●—
3-DAY SERVICE
COLLECTION AND
DELIVERY

—●—
TAILORING REPAIRS
 also

HOUSEHOLD AND
CARPET CLEANING

—●—
D. & A. H. BARKHAM
39 CRABTREE LANE
GREAT BOOKHAM

ture on chrysanthemums and dahlias by two local experts at Fetcham County Junior School at 8 p.m., and a question time evening with a panel of well-known gardeners as well as a talk by Mr. R. C. Wing on sweet peas for the garden. This is on April 7th at 8p.m. at Bookham Junior School.

The Flower Arrangement Club grows in numbers and popularity. Apart from its specialised interest it has arranged a number of social events to give the opportunity to members to meet informally. These include coffee mornings, garden parties, a wine and cheese lunch and an evening party. All have been highly successful.

It was happy to join with other county groups in participating in the Festival of Flowers at Guildford Cathedral in October. Mrs. Dyson and Mrs. Camp prepared the arrangement on a chest in the alcove linking with the Surrey Yeomanry Memorial arrangement on the opposite side. It was a horizontal arrangement in pink and gold to link with the Memorial. It was composed of pink gladioli, yellow carnations tinged with pink and dahlias of a similar shade. Various members of the club offered to grow seeds for special flowers. Unfortunately the bad season ruined these, but Mrs. Strudwick was able to provide the county organisers with some very fine moluscella grown

in her garden. Six members were invited to attend the special service and other members assisted as stewards.

The club has been generous in helping with village functions. It produced some beautiful arrangement for the hall on Village Day and it has also agreed to do decorations for Edenside House at Christmas and to assist with the scheme of decoration for the Barn Hall Christmas parties and dances.

BREVITIES

Two new B.C.A. Affiliations.

We welcome into affiliations the Bookham Branch of the N.S.P.C.C. Cruelty to children is still a major problem in our society and the vigilance of the N.S.P.C.C. is a necessary adjunct to that of professional bodies.

The Bookham Branch has organised quite a number of money raising functions during the year—coffee mornings, a wine and cheese party and a bazaar in November, which was well supported. If anyone would care to help in this charity they should contact the Secretary, Mrs. Dakin, or the President, Mrs. Robinson, of Eastwick Drive.

We also welcome our third Women's Institute, the Little Bookham Evening W.I., which meets in the Little Bookham Hall. It has only been operating for a year, but already it has to restrict its membership, having reached

80, which is the maximum that the hall can accommodate. It recently entered its first competition organised by the Emlyn W.I. Group for a Victorian costume and tied for third place with the Great Bookham Evening W.I.

Fine Examination Results. The Howard of Effingham School did well in the summer examinations, with results comparing favourably with other schools in the neighbourhood and well above the national average.

In the G.C.E. examination three pupils gained seven O levels, five six O levels, three five O levels, three four O levels, five three O levels and two two O levels.

All those who stayed on until the age of 16 entered for examinations. The remaining 17 pupils entered for the C.S.E. (Certificate of Secondary Education) examination. This is a new examination of a level slightly below the

L. S. HALL

1 GROVE CORNER
BOOKHAM

Tel. Bookham 3140

—*—
**Boot and Shoe
Repairs and Retail**

—*—
GENTS' TAILOR
Repairs and Alterations
Customers' Material made up
DRY CLEANING

RUNMORE GARAGE

(West Surrey Motors Ltd.)

Local Agents for

MORRIS :: HILLMAN :: HUMBER :: SUNBEAM

COMMER :: MORRIS COMMERCIAL

ANY MAKE OF NEW CAR SUPPLIED

SALES and SERVICE

INSURANCE H.P. FACILITIES

Fitted with the most modern equipment our Workshop offers YOU the service

YOUR CAR deserves——THE BEST

QUALITY USED CARS BEAM SETTING WHEEL BALANCING

ACCIDENT REPAIRS REPAINTING, ETC., ETC.

TYRE :: BATTERY :: ACCESSORY SPECIALISTS

“DO-IT-YOURSELF” SHOP

RUNMORE GARAGE

Guildford Road

Little Bookham

Telephone: BOOKHAM 230

G.C.E. standard, but a pass at top level is considered equal to a G.C.E. O level. Some entered for four subjects, but the majority entered for six or seven. And there were no failures.

Chairman of U.D.C. We are pleased that another Bookham resident of long standing has been made Chairman of Leatherhead U.D.C. Mr. S. E. D. Fortescue has lived in Bookham since his early boyhood. Even before his election as a councillor he gave much public service over a long period. Local amenities have been of continual concern to him. For many years he was Treasurer of the Local History Society, and was a committee member of the Countryside Protection Society. He was made a Vice-President of the Bookham Community

Association in recognition of the support he gave to it as a pioneer member, later as Treasurer, and now as its Hon. Solicitor.

It is no coincidence that he chose as his charity for the year "The Feed the Minds" Campaign and that he issued a challenge to youth and others to participate in the Worthing Walk in aid of the fund. It was a gesture which caught the public imagination and inspired the young people of the district; 290 members of youth organisations joined in, and 90 finished the course; outside entrants were 131, of which 41 completed the walk. Mr. Fortescue himself covered 27 miles — a very creditable achievement.

The first girl to finish was Christine Gray, from the Howard of Effingham School, who are to be congratulated on entering 20

contestants, nine of whom finished, plus one adult, so taking second place in the district. Bookham Scouts entered 17 with eight finishers. Bookham Baptist Social Fellowship entered 12 and two finished, the Boys' Brigade four and two finished, the Boys' Club 15 and six finished.

A high Academic Distinction has been achieved by Mr. Michael Rogers, B.Sc., Ph.D., who has been appointed Professor of Computer Science at Bristol University, from August 1st. Bristol is noted for the significant contribution it has made to the Sciences.

Mr. Rogers is the son of Mrs. A. R. Rogers, who teaches at Eastwick Primary School, and the late Mr. V. Rogers, who was for many years the representative of the "Leatherhead Advertiser" and active in the British Legion and other spheres of public work. Michael was educated at Dorking Grammar School. He obtained his degrees of B.Sc. and Ph.D. at London University and spent three years at the University of Illinois, U.S.A., engaged in research in Mathematics.

Congratulations to Miss Barbara Gott who, having been awarded an Upper Second Class Honours Degree at Southampton University, is now working for her Ph.D. at the same university. Her subject is Physiology and Biochemistry. Barbara is engaged to a fellow student who is also studying for his Ph.D. They plan to marry in March.

Britain's only Hamster Farm . Known throughout the World.

Parslow's Hamster Farm

(Percy W. Parslow, President National Hamster Council,
Judge to N.H.C.)

COMMONSIDE, GREAT BOOKHAM

Tel. BOOKHAM 4216

Holiday Homes for Pets (No Dogs or Cats)

BING FOR APPOINTMENT TO VIEW

Approach from Station: Turn left. 150 yards on, turn left over Common, take centre track to Commonside, turn right.
By car: via Kennel Lane and Glade, turn sharp left where road forks.

A Reverent and Comprehensive Service

The need for careful funeral arrangements comes, as a rule, very suddenly and it is then that you require not only personal advice, but immediate attention to your wishes . . . With complete confidence you can entrust every detail of the arrangements in accordance with these wishes. . . .

HAWKINS & SONS

Funeral and Cremation Service

Private Chapels of Rest

2 HIGHLANDS ROAD

(Next to Parish Church)

LEATHERHEAD

Day and Night Service:

Telephone: Leatherhead 2435 Bookham 3242

Seconded to the United Nations.

Mr. Michael Featherstone, whose father teaches at Therfield School and is Head of the Leatherhead Evening Institute, is doing a worthwhile job in the developing countries. While working for the Overseas Development Department in Tanzania, he has been seconded to the United Nations for an experimental irrigation project. Michael was educated at Dorking Grammar School and is well known in local Congregational circles where he took a leading part in youth activities. He took his degree at Leeds University and afterwards took his M.Sc. in irrigation and land drainage engineering.

President of B.C.A. The new president of the community association is Mr. V. L. Austin, O.B.E., of Fastwick Drive. He came to Bookham 12 years ago, and he and his wife joined the Association immediately, their interest being aroused by a copy of the *Bulletin* left behind in their new home. In appreciation of his services to the Association in a variety of ways, including that of Distribution Manager of the *Bulletin*, he was made a vice-president some years ago.

He is well known in the village because of his participation in a number of local organisations. He is a vice-president of the Garden Society and a regular exhibitor. He is also vice-president of the Great Bookham Branch of the

Conservative Association.

A lifetime's experience of negotiating bodies will make him a good president. He was a senior civil servant and Deputy Controller of the Post Office Supplies Department. On his retirement in 1955 he was awarded the O.B.E.

He follows in a line of highly esteemed presidents—the late Dr. Waterfield, the late Mr. E. E. Oldershaw, and Miss E. Micholls. Miss Micholls now becomes the first past president.

On the County Education Committee. Mrs. E. Harrison has been appointed their representative on the County Education Committee by the S.W. Divisional Education Executive. Mrs. Harrison is chairman of the local school managers and has been Leatherhead U.D.C.'s selected representative on the Divisional Education Executive since its inception. She is an M.A. of Oxford University and has had considerable experience in the field of education.

She is secretary of the Bookham Community Association.

Advice for Students. Parents may like to know that the County Education Committee are setting up an information and advisory service on full-time education courses available throughout the country. This will cover not only universities, but technical colleges and other institutions of advanced studies. It will be of great help to parents and students and will

make known where specialised courses are available and where places are still open. Mr. N. G. Mackinnon, who is one of the county's vocational guidance officers, will be in charge of the department, telephone Kingston 1050, Ext. 298.

Obituary. We offer our sympathies to Mrs. Van-Scolina, and her family, on the death of her husband, Mr. F. C. Van-Scolina, after a long illness. He was widely known in Bookham in connection with his work for the Residents' Association of which he was secretary for five years. In this capacity he gave a service which was outstanding for the painstaking attention given even to the smallest detail. Members of the Community Association remember that he was one of their early members and that he helped to build up the social club, now known as the Barn Hall Club.

He was also Chairman of the Bookham Branch of the Liberal Association after its formation some years ago.

TO ALL ROAD USERS

ARE YOU UP-TO-DATE?

Does *every* Road Sign mean something to you? Or are you too lazy to learn and rather trust to luck or to the know-how of the other person to avoid that crash?

STOP ACCIDENTS

BE WITH IT AND LEARN THE NEW TRAFFIC SIGNS *NOW*. KNOWLEDGE BRINGS PEACE OF MIND TO YOU AND OTHERS.

Booklet, illustrated in colour, from any stationer, price 6d., or free from:

LEATHERHEAD ACCIDENT PREVENTION
COUNCIL

RED HOUSE ANNEXE
BULL HILL, LEATHERHEAD.

Jack & Jill Nursery

for

CHILDREN AGED 2-5

At 214a LOWER ROAD

GREAT BOOKHAM

(registered and approved by
Surrey C.C.)

Established 1948

Mornings 9.15—12.15 and
Monday & Thursday 2—4.30 p.m.

Apply to Mrs. B. SIMMONDS
TEL. BOOKHAM 4387

CASELDEN'S NEETANDKWIK

Shoe Repair Service

Long Soling a Speciality

Ladies' Fashion Shoes repaired
on makers' lasts

Collection and delivery by
arrangement.

22 CRABTREE LANE
BOOKHAM

Tel. 2434

HERRIOT ASSOCIATES LTD.

Incorporating D. C. P. West & Company (Est. 1891) and associated with
Walter Herriot and Company Ltd., of London

Incorporated Insurance Brokers

- (1) are able to arrange your insurances with any Insurance Company you wish. Active accounts with over 100 Companies and Lloyds groups are in existence.
- (2) are prepared to discuss and to advise you regarding the most suitable type of insurance for your needs, and as to which Insurance Company to choose.
- (3) have a specialist section dealing with Life and Annuities, Pension Schemes and Estate Duty problems.
- (4) can assist you in making house purchase and mortgage arrangements.
- (5) act as Agents for the B.U.P.A. and London Association for Hospital Services, various Unit Trusts (whether or not linked to insurance plans) and as investment agents for several Building Societies.

If you think these services might be of value to you, please do not hesitate to ask. No charge is normally made for advice, completing arrangements, or subsequent service in connection with claims, etc.

Previously at 43 BRIDGE STREET, LEATHERHEAD

New and old clients and friends are welcome to visit the new offices at

9 THE STREET . ASHTEAD

Tel. Ashtead 6441/2

E. E. DUNKEY

LIMITED

4 Grove Corner
BOOKHAM

Tel: Bookham 3293



PHOTOGRAPHIC EQUIPMENT



Dispensing Chemist

GIFTS

*all the
year round*

o o o o o

Agents for

DOROTHY GRAY

YARDLEY

REVLON

INNOXA

HARTNELL

OLD SPICE

*and other
proprietary brands*

R. W. SCOTT & SON

**Builders
Decorators
Undertakers**

Works:

Guildford Road, Effingham.

Tel.: Bookham 2166

Private Address:

6 Norwood Road,
Effingham, Surrey.

5 minutes from Bookham Station

BED AND BREAKFAST OR WEEKLY TERMS

Bookham Grange Hotel



(BOOKHAM GRANGE HOTELS LTD.)

BOOKHAM COMMON

LUNCHES 12.30—2 DINNER 7.30—9.30

SUPPER LICENCE . GOOD FOOD

*Ballroom available for Wedding
Receptions, Private Parties, Dinners, etc.*

*We Specialise in Outside Catering at
Local Halls or Private Parties*

Resident Director: W. H. J. Sale

Phone: Bookham 2742/3

David Fuller

5 CHURCH ROAD

BOOKHAM

Tel. Bookham 4 7 1 0

Men's Outfitters

Ladies' Gent's Children's Shoes

Carpet Planners and Fitters

TUF, EATON, DURAFLEX, PIRELLI, ETC.

P. & M. MITCHELL

DOMESTIC HARDWARE & IRONMONGERY

PYREX - SWAN
PRESTIGE - SKYLINE
PLASTIC
HOUSEWARES etc

TOOLS - PAINTS
WALLPAPERS
GARDEN SUNDRIES
KEY CUTTING

Personal Attention
Always

45 CHURCH ROAD, GREAT BOOKHAM

Phone: BOOKHAM 3824

Telephone

Bookham 3013

Cynthia's

Ladies', Children's & Baby Wear
Sirdar, Wendy & Studley Wools
Hosiery, Gloves & Haberdashery

5 GROVE CORNER
GREAT BOOKHAM

CAR HIRE

CHAUFFEUR DRIVEN
AND SELF DRIVE

**Lock and
Gallagher**

Cars available for all
occasions

WOODHATCH
GILMAIS
BOOKHAM

Phone 3242

Wines to suit all tastes at prices to suit all pockets

THE BECKLEY OFF-LICENCE

(GILBERT REEVES)

1-3 NEW PARADE, LEATHERHEAD ROAD
GREAT BOOKHAM

Telephone 5575

Drinks Supplied for Weddings and Parties on Sale or Return

Glasses Loaned Free

*

Free Delivery in all Areas

BOOKHAM COMMUNITY ASSOCIATION

BARN HALL HIRING CHARGES

| | | Public Lettings | Affiliated Organisations |
|------------------------------------|-------------------|-----------------|--------------------------|
| Mon., Tues., Wed., Thurs. Evenings | (Social) | £5.5.0 | £4.4.0 |
| | (Meetings) | £1.10.0 | £1.10.0 |
| Friday | Evening | £9.9.0 | £7.7.0 |
| Saturday | Evening | £9.9.0 | £7.7.0 |
| | Afternoon | £5.5.0 | £4.15.0 |
| | Afternoon/Evening | £11.11.0 | £9.9.0 |

Other times and Sundays by arrangement

Barn Hall bookings to Mrs. C. B. Medway, 35 The Garstons.

Bookham 4967

ELECTIONS

President: V. L. Austin, Esq., O.B.E.

Past President: Miss E. Micholls.

Vice-Presidents: Mrs. B. Oldershaw, Messrs. C. Beddous, R. Kepple, W. Bell, G. Everett, S. Fortescue, R. Marshall, A. Marson.

Hon. Life Member: R. Saunders, Esq.

Hon. Secretary: Mrs. E. Harrison.

Hon. Asst. Secretary: Mrs. F. Catt.

Hon. Treasurer: A. G. Medway, Esq.

Individual Members' Representatives: Mesdames Cuddeford, Godwin, Edwards, Messrs. Cuddeford, Stockwell, Catt, Woodrow-Clark, Freeman, Rombach, Larkin, Harrison, Dr. Sowerbutts.

BALANCE SHEET

The accounts showed a Building Reserve Fund of £1,400. Rents from the Barn Hall just covered the current outgoings but left no margin for maintenance and improvements. These, the treasurer explained, should be the first charge on Village Day receipts.

A separate account for Village Day and Village Week was included because of its general interest. The expenditure was £48 10s. 9d. and the receipts were £528 9s. 10d. The balance of £479 19s. 1d. had been transferred

NEW YEAR'S EVE BALL

BUFFET SUPPER

Admission 30/-

COMMENCING 7.45 P.M.

Music by George Davies

Tickets limited, from Mr. W. Rombach, Bookham 4466
and members of the committee

Come Co-operative Shopping . . .

£70,000

paid to our members in dividend and interest last year

- * Highly competitive prices
- * Free delivery service
- * Over 2,300 grocery lines in stock
- * Customers' parking facilities
- * Open until 6.30 p.m. Fridays for late shopping

Guildford & District Co-operative Soc. Ltd.

LEATHERHEAD ROAD, GREAT BOOKHAM

Tel. Bookham 218

CHARRINGTONS

for

Solid Fuels

and

Mobil Fuel Oils

Free advice given on all aspects of central heating

15 HIGH STREET

GREAT BOOKHAM :: SURREY

Tel. Bookham 4647

MRS. N. C. WOLFF'S

LEATHERHEAD

SECRETARIAL SCHOOL

28 BRIDGE STREET

LEATHERHEAD

Phone: Leatherhead 2401

A COMPLETE

SECRETARIAL

TRAINING

INDIVIDUAL TUITION

*Duplicating, Typewriting
and all Secretarial Services*

to the Building Fund. The stalls showed the largest profit of £216 8s. 8d., the sideshows provided £77 4s. 6d., the raffle £82 11s. 6d. The events of Village Week raised £44 5s. 5d.

SECRETARY'S REPORT

The past year has been one of consolidation rather than of new enterprises. Many minor improvements have been made to the interior and exterior of the Hall, culminating during August in a grand clean-up and decoration operation. We are grateful to the little band of helpers who completed this.

The Grounds have been worked on steadily, the latest effort being the clearing, levelling and grassing of the corner of the triangle immediately behind our fence.

We can again report a record Village Day and an Exhibition of very high standard indeed showing the activities of our local schools who co-operated enthusiastically in its planning.

Village Week seems to have established itself as a permanent feature of our local life.

Our membership figures are creeping up and are just passing 550. They should be much higher. We now have nine clubs of our own, and an affiliation of 38 local organisations. Three others are seeking affiliation. The County Council, the Leatherhead U.D.C. and the W.E.A. have appointed representatives to our Council, which is the governing body of the Association.

Adult education is taking a

larger place in the activities promoted in our Hall and it is good to report that the Evening Institute and other bodies are making increasing use of our facilities for classes in the mornings and afternoons. The Hall cannot accommodate all the organisations who would like to use it and the need for a further hall becomes increasingly compelling. This, however, must await the completion of our second extension which has been approved by our Council. It is hoped that it will include a club room and a small apron stage, but details have not yet been finalised and we are still building up our funds for this enterprise.

The Hall, Grounds and Social Committees have given yeoman service. Never in our history has so much voluntary work been performed so continuously. With more helpers, who would be warmly welcomed, the burden on the few could be considerably eased. We feel that we are entitled to ask for this help because all our efforts are for the village and not for ourselves. We would like more participation by younger people as what we are trying to create is a lively Centre and lively activities which will be handed on into their care.

The B.C.A. Over Sixties Committee continues to assist the elderly wherever the need seems greatest. In all our planning we have made provision for the facilities needed for the very successful Day Centre run under the auspices of the Old People's

Welfare Committee. This is regarded by the County authorities as one of the best in Surrey and would have appeared on television if the Hall had not unfortunately been closed for cleaning at the time. The newly started Visiting Scheme could be strengthened with further volunteers.

The Polesden Lacey performances of "The Taming of the Shrew" attracted large audiences and the many Association supporters who went up to help, despite the indifferent weather, felt that it was all very worthwhile.

The Bulletin goes on, thanks to the advertisers who take space in it, and we commend them to the patronage of the village.

I record my thanks to the President, officers and members of the Executive and the sub-committees, and to the caretaker. All of them have shouldered much heavier responsibilities.

Howard Weale

Bookham's Family Grocer since 1870

LITTLE BOOKHAM STREET

Tel. Bookham 5 2 4 4

SELF-SERVICE AND DELIVERIES

No Parking Problems

*For the Best Selection
of
PHOTOGRAPHS
of your
WEDDING*

Phone BOOKHAM 2748

A personal service from

J. C. FULLER

6 DAWNAY ROAD

BOOKHAM

G. WALES

Timber Merchants

Bookham 3272 & 4596

Imported Softwoods sawn
and prepared to order

Logs

Larch Poles for Pergolas

Interwoven Fencing

Panels and Posts

Pea and Bean Sticks

Trees Topped and Lopped

INTERIOR FURNISHERS

ambrose

We Specialise in . . .

FITTED CARPETS

FABRICS, FURNITURE

FIRST-CLASS WORKMANSHIP WITH

COMPETITIVE PRICES

103 THE STREET, FETCHAM (Leatherhead 2 1 1 8)

PARADE COURT, OCKHAM ROAD SOUTH, E. HORSLEY

(E. Horsley 3790)

B.C.A. Officers and Clubs

President: V. L. Austin, O.B.E.
Hon. Sec.: Mrs. E. Harrison, 61 Eastwick Drive, Bookham 5702.
Hon. Treasurer: Mr. A. G. Medway, 35 The Garstons, Bookham 4967.
Chairman: Mr. V. B. Stockwell, 22 The Park, Bookham 3133.
Barn Hall Manager: A. M. Marson, 94 Kingston Road, Leatherhead 3053.
Membership Sec.: Mrs. B. Oldershaw, 99 Little Bookham Street, Bookham 2241.
Advertisements: H. B. Atkinson, 3 Park View, Bookham 2933.
Barn Hall Bookings: Mrs. C. B. Medway, 35 The Garston, Bookham 4967.
Barn Hall Club: Miss P. Barfield, Merrilees, Maddox Lane.
Camera Club: K. H. Williamson, 4 Vincent Close, Fetcham, Bookham 4919.
Gramophone Club: A. E. Baker, 81 Eastwick Drive
Old Time Dancers: R. H. Pimm, 27 The Garstons, Bookham 4196.
Over Sixties: Mrs. T. Weston, 50 Keswick Road, Bookham 5706.
Scottish Dancers: G. R. Marshall, 63 Eastwick Drive, Bookham 2096.
Dramatic Society: Mrs. A. Lawrance, 52 Strathcona Avenue, Bookham 4532.
Flower Arrangement Group: Mrs. S. McLeod, 11 Allen Road, Bookham 4809.
Youth Club: J. Stemp, 58 Whiteway, Bookham 4143.

BOOKHAM ORGANISATIONS (Affiliated to B.C.A.)

Bookham Boys' Club: K. A. Vincent, 1 Sole Farm Avenue.
Bookham Bowling Club: C. Flowers, Shaldon, Guildford Road, Bookham 4807.
British Legion, Effingham and Bookham Branch: M. S. Pickering, Standardhill, Guildford Road, Effing.

British Legion, Women's Section: Mrs. L. A. Pickering, Standardhill, Effingham, Bookham 5581.
Bookham Cricket Club: J. Hubbard, 45 Sole Farm Road, Book. 3874.
Cross Daggers Cricket Club: R. Lovegrove, 9 Humphrey Close, Fetcham, Bookham 3984.
Eastwick Park Cricket Club: B. Aspital, 65 Hazel Way, Fetcham, Bookham 4859.
Choral Society: L. S. Hughes, 2 Blackthorne Road, Bookham 2785.
Conservative Association, Gt. Bookham Branch: J. E. Farrier, 24 The Garstons, Bookham 3986.
Conservative Association, Little Bookham: M. C. Pope, Little Oaks, Childs Hall Road, Bookham 4018.
Labour Party, Bookham Ward: E. H. Churcher, 6 Twelve Acre Close, Bookham 3949.
Liberal Association, Bookham Branch: W. B. White, 46 Sole Farm Avenue, Bookham 4225.
Garden Society: R. C. Wing, 20 Gilmais, Bookham 3687.
Eastwick Allotments and Gardens Association: C. B. Martin, Omira, Leatherhead Road.
Bowls Section—Gillett Sports: C. A. Upton, Bybrook, Sole Farm Road, Bookham 3279.
Bookham Football Club: D. Oliver, 27 Middlemead Road, Book. 4236.
Eastwick Parent and Teacher Association: R. A. Brackpool, 21 Allen Road, Bookham 2933.
Girl Guides, 3rd Company: Mrs. L. Mills, 38 Strathcona Avenue, Bookham 3602.
Local Guide Association: Mrs. R. A. Connellan, 28 Mead Crescent, Bookham 3930.
1st Bookham Scouts: G. V. Child, 9 Sole Farm Road, Bookham 2147.
2nd Bookham Scouts: E. Tarrington, 4 Dowlans Close, Bookham 2960.
3rd Bookham Scouts: T. R. Holdstock, 41 Crabtree Lane, Bookham 4743.

Bookham Girls' Life Brigade: Mrs. F. Palmer, The Lodge, Randalls Road, Leatherhead 4729.
Boys' Brigade: L. S. Kay, 13 Nutcroft Grove, Fetcham, Leatherhead 4302.
Catholic Youth Club: Mr. D. Lynch, 46 Middlemead Road.
Catholic Women's League: Mrs. Lacey-Smith, Dintham Lane, Effingham, East Horsley 3256.
Bookham Red Cross Cadet Unit: Miss D. Rush, 94 Overdale, Ashstead 2004.
League of Friends, Leatherhead Hospital: Mrs. Dames, 23 Barn Meadow Lane, Bookham 4074.
Leatherhead and District National Savings Group, Bookham Ward: Mrs. D. Leonard, 25 Allen Road, Bookham 3432.
National Trust, Bookham Commons Committee: Dr. J. G. Sowerbutts, Riddlesdale, Church Road, Bookham 3308.
Polesden Lacey Camping Club: Mrs. M. White, 26 High Street, Collier's Wood, S.W.19.
Women's Institute (Afternoon): Mrs. Van-Scolina, 4 Groveside, Bookham 5809.
Gt. Bookham W.I. (Evening): Mrs. D. Edwards, 60 Kennel Lane, Fetcham, Bookham 5409.
Little Bookham W.I. (Evening): Mrs. K. Stratford, 69 The Garstons, Bookham 3909.
Rifle Club: O. J. Rattenbury, 17 Dorking Road, Bookham 3308.
Bookham Square and Folk Dance Club: Mrs. Thomas, 49 The Garstons, Bookham 4607.
Bookham Stoolball Club: Mrs. M. Francis, 38 Newenham Road, Bookham 3075.
Bookham Winemakers Club: Mrs. Shapland, 60 Eastwick Drive, Bookham 2674.
N.S.P.C.C.: Mrs. J. Dakin, 8 Sole Farm Avenue, Bookham 4225.

CRIPPS

Fishmonger and Poulterer

NEW PARADE
CHURCH ROAD.
BOOKHAM

Telephone: Bookham 4022

FISH at its best.

FRESH SUPPLIES OF QUALITY FISH DAILY
ALSO FINE SELECTION OF FROZEN FOODS
HYGIENE AND CLEANLINESS ASSURED

*Home-made Cakes
Anniversary Cakes
made to order*

THE WALNUT TREE

*Morning Coffee
Lunch . Afternoon Tea*

*

5 CHURCH ROAD
(Opposite the Church)
GREAT BOOKHAM
Tel. Bookham 3608

*

Closed Sunday and Monday

Home Counties Dairies



Channel Island - Pasteurised
Homogenised - Sterilised
Flavoured Milk and
Fresh Cream Delivered Daily

HOME FARM, Effingham
Telephone: Bookham 253

68, Church Road,
Gt. Bookham
Telephone: Bookham 345

LEATHERHEAD THEATRE CLUB

High Street :: Leatherhead

Telephone: Leatherhead 2852

The Leatherhead Repertory Company presents first-class plays with fully professional casts. Season from August to May. Each play runs for three weeks.

*For times of performances and prices see local press.
Special terms for parties of ten or over.*

Tickets may be purchased only by members of the Theatre Club—
Annual Subscription 2/6.

The Leatherhead Green Room Club is fully licensed and provides meals before and after the show. Details of membership from the Club Manager.

Telephone: Leatherhead 4223.

P. J. CAMP

- Stationery, Printing
- Greetings Cards,
Fancy Goods, Books
- Toys, Tobacco and
Confectionery

Gt. Bookham Post Office
CHURCH ROAD
Phone Bookham 11

C. CRABTREE (Chemists) LTD.

(C. CRABTREE, M.P.S., F.B.O.A. . L. G. CRABTREE)

Chemists and Opticians

Agents for

KODAK AND ILFORD CAMERAS & ACCESSORIES

High-Class Toilet Preparations:

COTY . YARDLEY . REVLON . LENTHERIC . ETC.

. . . . Daily Deliveries

BOOKHAM PHARMACY

9 HIGH STREET . GREAT BOOKHAM

(Tel. Bookham 2067)

and

1 THE STREET, EFFINGHAM (Tel. Bookham 4033)

VICTORIA FURNISHINGS

HIGH STREET

BOOKHAM

Telephone 2923

●
*Carpets Supplied and Fitted
Curtains and Loose Covers
Divan Beds and Bedding
All Soft Furnishings
Sunway Blinds
Occasional Furniture*

Pianos

For the Right "SOUND OF MUSIC"

TRY

J. E. VINER

Pianoforte Tuner and Repairer
(Late of John Broadwood & Sons,
Ltd., W.1.)

who visits the district regularly

Please write to:

7 Riverholme Drive

West Ewell

or Tel. EWELL 5904

Before 9 a.m. - After 6.30 p.m.

Elizabeth's

Harrington Baby and

Children's Wear

Dresses by Berkertex,

David Barnes and other leading
Fashion Houses

Skirts and Slacks by Gor-Ray,
Slimma, etc.

Jumpers and Cardigans by Jaeger,
Bear Brand, Eastex, Deanbrae
Lingerie by Leading Makers
Nylons by Bear Brand, Charnos,
Glamour Girl, Plaza, Dent
Foundations by Exquisite,
Lovable, Twilfit, Berlei

26 CHURCH ROAD

GREAT BOOKHAM

Tel. Bookham 3307

LONGHURST UNDERTAKERS

LTD

86 High Street, Epsom

Phone: EPSOM 23548

C. J. FOX
HIGH STREET
GT. BOOKHAM

BUTCHERS & FARMERS

Famous for
HOME PRODUCED MEAT
OF GREAT QUALITY

... Deliveries ...
Phone 210

H. BRACKENBURY & SON

YOUR HIGH STREET IRONMONGERS

"WHERE COURTESY COUNTS"

17 HIGH STREET, GREAT BOOKHAM

Telephone:
BOOKHAM 329

R. J. CLATWORTHY
LIMITED

Radio, Television and
Electrical Engineers

●
Agents for all makes of
RADIO TELEVISION
WASHING MACHINES
and REFRIGERATORS

●
ALL RECORDS
SUPPLIED

19 High St., Gt. Bookham
BOOKHAM 5329

**DOUGLAS
& Company**

F.A.L.P.A.

Incorporated

**AUCTIONEERS,
ESTATE AGENTS,
VALUERS & SURVEYORS**

**8 HIGH STREET,
LEATHERHEAD**

Telephone 4136/7

Also at

Ashtead, Epsom, Ewell
and Worcester Park

**DOUGLAS
& Company**

F.A.L.P.A.

ESTABLISHED 1856

C. BRIDGER & SONS

(Douglas N. Cloutte, F.R.I.C.S., F.A.I.)
Chartered Surveyor

(John E. Marchington, F.V.I.)

(Clive A. Stanford, F.R.I.C.S., F.A.I.)
Chartered Surveyor

(Michael T. Hind, F.A.L.P.A.)

Consulting Surveyors
Auctioneers, Estate Agents
and Valuers

18 CHURCH ROAD, GT. BOOKHAM

Tel.: Bookham 2045/6

Associated Offices also at:

Leatherhead . Ashtead . Epsom . Tolworth . Guildford
Farnham . Worcester Park . Woking . Godalming
Ash Vale . Ewell . Haslemere . Horsham

Architectural Department: Ashtead Office
(J. C. Scrivener, A.R.I.C.S., Chartered Surveyor)