

The Bookhams Bulletin

Quarterly Journal of the Bookham Community Association

No. 74

MARCH, 1952.

20th year



CRESCENT Cinema

LEATHERHEAD 3203.

CONSISTENT PROGRAMMES
CONSISTENT SOUND
CONSISTENT PROJECTION

||| IT PAYS TO SEE IT
AT THE CRESCENT

The LEATHERHEAD WINE STORES

will be pleased
to supply copies
of their latest
Price Lists of
Wines and Spirits
on application.

NORTH STREET,
LEATHERHEAD.
Tel: L'HEAD 2301.

T. J. LEAVEY & SON

P. C. TURTON

MEN'S TAILORS

and

OUTFITTERS

31 / 33 BRIDGE STREET,
LEATHERHEAD.

Tel.: 2478.

CAR HIRE
Day & Night

Agents:
MAYFLOWER Caravans



APPOINTED
GARAGE

Telephone :
Bookham 207

INSURANCES

BECKLEY GARAGE

(C. A. WHITEMAN)

LEATHERHEAD ROAD,
GT. BOOKHAM

All types of Repairs and Reconditioning. Cylinder Reborinz on premises. Tyre and Battery Sales and Service. Cellulose Spraying. Welding. Accessories and Spares.



The BOOKHAMS BULLETIN

Quarterly Journal of the Bookham Community Association

No. 74.

MARCH, 1952.

20th year

CONTENTS

	Page
Editorial	1
Prizewinning Essay ...	3
A Nocturnal Aventure ...	5
Bookham Girl Guides ...	7
Impressions of the A.G.M.	8
B.C.A. Club News ...	10
Sports News	12
Bulletin Income and Ex- penditure	14
Our Paper Drive	14

EDITORIAL

The King's passing came as a profound shock to his people, who through the difficult years of his reign had always looked to him for example and inspiration. Some will recall with pride and satisfaction his fine record of social service, and in particular the camp he founded at New Romney a quarter of a century ago where public schoolboys shared a seaside holiday with an equal number of boys from the East End. We whose privilege it is to live in Bookham have a special link with the late King and the Queen Mother, for it was at Polesden Lacey that they spent part of their honeymoon. By kind permission of the Editor, we reprint below from the *Dorking and Leatherhead Advertiser* of the

8th February an excellent account of their welcome to Bookham on that occasion.

"At this time of national mourning Surrey will also recall proudly a happy day before the King's reign began — Thursday, April 26th, 1923, when the Duke and Duchess of York came from their wedding at Westminster Abbey to spend the first part of their honeymoon at Polesden Lacey, the beautiful country mansion and estate on the hills between Dorking and Leatherhead. Polesden Lacey, in those days the home of the Hon. Mrs. Ronald Greville, was lent by her to the royal couple. Since Mrs. Greville's death, the house and gardens have become, under her bequest, National Trust property. The rooms are still furnished in the elegant way they were when the Duke and Duchess of York were honeymooning there.

"The Duke of York was regarded as an old friend of Great Bookham (the parish in which Polesden Lacey stands), for he was fairly often Mrs. Greville's guest in house parties there. In May, 1922, he honoured the village by attending a fête organised to aid the Parish Church. When he and his bride arrived at

Bookham railway station at 5.7 p.m. on their wedding day, a great cheering crowd awaited them. Flags waved joyously as they entered a car for the two miles road journey to Polesden Lacey. The immediate environs of the station were crowded with employees from the nearby factory of Messrs. Gillett, Stephens and Co. Ltd. As the royal car moved slowly through the crowd, it stopped for a few moments while the Duchess accepted a bouquet presented on behalf of the factory employees by Miss Joan Standing.

"At the Crown Corner near the village church in the centre of Great Bookham, the royal car stopped again. An address of welcome was presented to the Duke by Mr. D. W. McFarlane (Chairman of the Parish Council) and a bouquet was presented to the Duchess by Miss Jean McFarlane. That was a great day for the villagers of Great Bookham, especially for the school children who were assembled in gay, flag-bedecked ranks to watch the presentations at the Crown Corner. On the following day, the children had a tea party, paid for by the balance of the village's 'Royal welcome decorations fund'."

CUBITT & WEST

Surveyors, Auctioneers, House, Land & Estate
Agents.

Specialists with local knowledge
in dealing with all forms of
property in Bookham and the
Surrounding Districts.

Valuations for Probate and all Purposes.
Rents collected and Property managed.
Furniture Sales conducted.

Local Office :

CROSS ROADS, Gt. BOOKHAM.

(Opposite the Church)

Telephone : BOOKHAM 2744 - 5.

Offices also at :

EFFINGHAM · DORKING · FARNHAM
HASLEMERE & HINDHEAD

S. MADGE

— & SON —

Family Butchers
Great Bookham.

'Phone: 12

Poultry and
Rabbits always
available.

●

Established over a century

W. R. HEWLINS Ltd.

HIGH STREET,
Gt. BOOKHAM

Dispensing, Photographic
& Veterinary Chemists

Agents for: YARDLEY
COTY - INNOXA
BRONNLEY and
HIGH CLASS TOILET LINES
Bookham Brand and
Proprietary Medicines.

KODAK & ILFORD FILMS

TEL: BOOKHAM 67

Delivery Anywhere

Congratulations to Doris L. Muller, a pupil at the Manor House School, Little Bookham, to whom the prize of one guinea has been awarded in the Essay Competition announced in the September, 1951, issue. The prize was presented to Miss Muller on behalf of the Community Association by Dr. Kathleen Cooper.

PRIZEWINNING ESSAY

What I should like to do when I leave school

I have given a great deal of thought to what I should like to do when I leave school. I think that most children do as soon as they have attained about 12 years of age. This is just as it should be, for the choosing of a career is of paramount importance: it can mean happiness and success or boredom and failure.

I think that nearly all of us, as children, cherish ambitions of one day becoming great in some way or other. It depends upon our talents and intellectual tendencies which way we choose. Some of us — those scientifically inclined — want to be doctors, nurses, veterinary surgeons, engineers, or chartered accountants. There are others of more artistic temperament who want to be artists of some sort: writers, painters, instrumentalists.

Whatever we want to be, a tendency to shy away from routine and office jobs is evidenced in almost all of us. Few of us, of our own volition, elect to be shorthand typists, accountants, or clerks. I am glad that this is so, for in choosing the more exciting and unconventional jobs we show

that the spirit of adventure is still alive in this world of ours.

When I was only 6 years of age I swore solemnly that I was going to be an authoress, and my chief interest lay in poetry, which I wrote almost as freely as I read it. After that I wrote a few plays and a pantomime, which were produced at school with some success.

Since then I have modified my ambitions to be an authoress and have decided that I would like to be a journalist since authorship is only really a part-time job. More than anything, I should like to be apprenticed to a geographical magazine or newspaper and write articles on people and places of interest abroad.

I know that journalism is hard work, but hard work is necessary in all jobs, particularly in those where there is keen competition, as there is in journalism. One starts humbly, too, but the example of such men as the brilliant Alistaire Cooke, a top-ranking journalist who has climbed from these humble beginnings, is a constant encouragement. . . .

Anyhow, whatever we all decide to do when we leave school, one thing is certain: hard work and interest are the foundation of success!

WRITE FOR THE BULLETIN!

The Editor will be glad to receive articles (400 words) or letters (150 words) of interest to Bookham people, for publication in the *Bulletin*. Contributions from younger writers will be particularly welcome (the authors of those on this page and page 7 are under 18). Address your MSS. to "The Croft", Dowlans Road.

if it's . . .

- CHINA or GLASS
 - TOYS or FANCY GOODS
 - KITCHENWARE or HARDWARE
 - TOOLS or DISTEMPERS
 - BRUSHES or PAINTS
 - SEEDS or GARDEN GEAR
 - SOAPS or POLISHES
 - FURNISHINGS or BEDDING
 - CYCLES or PERAMBULATORS
 - ELECTRICALS or FURNITURE
- and ALL BUILDERS SUPPLIES

then it's . . .

MOULDS LTD.

Leatherhead & Cobham

PHONE: 2202

PHONE 54

C.I. Curtis (Dairy Farmers) **L^{td}**

Model Premises & Service

**Home Farm,
Effingham.**

Telephone Bookham 253

Special Notice to our Valued Customers:

Let us have your orders for Groceries & Provisions.

We will deliver.

BEST QUALITY ONLY

**Church Road,
Gt. Bookham.**

Telephone: Bookham 345.

WALKER SMITH

*Bookham's Oldest
Established Stores*



Famous over half a century for

**HIGH CLASS
GOODS**

Telephone: Bookham 6

Provisions
Groceries
Wines
Spirits
Hardware
China
Greengrocery

CASSELDEN'S

**"NEETANDKWIK"
SHOE REPAIR
SERVICE**

CRABTREE LANE
GREAT BOOKHAM

Any Shoe you care to send
We will undertake to mend

*Specialists in
Razor cutting,
Artistic natural
Permanent Waving
Hair colouring*

**Maison
Veronica**

(I. B. MADDOCK)

Church Road,
Gt. Bookham.

Phone: Bookham 2526.

M. W. HANSON

Baker & Confectioner

**Hygienic Steam Bakery
— Great Bookham —**

Telephone: Bookham 124

Best Quality Bread and Confectionery supplied daily
Wheatmeal, Hovis and National Wheatmeal.

A NOCTURNAL ADVENTURE

In the Scouts a boy is trained to "be prepared" for anything— from dealing with an accident to putting a bridge over a river. One interesting part of his training is a "night hike", an exercise in which he is required to make his way from place to place at night, using natural guides, such as the stars.

During the evening of the last day of 1951 two parties of suspicious-looking local Scouts, well wrapped-up, left Bookham by bus—not yet knowing their destinations. The Scouts had been given coded instructions barely a quarter of an hour before and had also been given sealed instructions which were to be opened only in an emergency.

Party A caught a bus to Leatherhead, and found out from the instructions (which they decoded *en route*) that they were to proceed to Westcott via Dorking. Party B was sent by bus to Westcott via Clandon, Newlands Corner and Gomshall. Both parties arrived at their destination at precisely 10 p.m.

The Scouts at once struck north up a track, past a large house, through a farm and over a stream. After a long drag over a very muddy field they reached a railway bridge, where they rested. They then ascended the steep slope of the south side of Ranmore. At 11.45 they rested on a concrete pill-box and had some refreshment, and on the stroke of midnight joined hands and sang Auld Lang Syne. Resuming their journey, they had nearly

reached the Ranmore road when they lost their bearings in a very dark and extensive wood. Hitherto the use of torches had been banned, but circumstances now forced a relaxation of their self-imposed discipline, and led by a Senior Scout carrying a torch and a compass they at length reached open country once more.

As the party reached Polesden Lacey, on the last lap of the hike, the sky became overcast and rain began to fall. But it did not last long, and on arrival at H.Q. some thirty minutes later (2 a.m.) they beheld the glory of the full expanse of the heavens.

The Scouts bedded down in a somewhat draughty Scout hall, but were soon sound asleep, thankful even for a bed of hard floorboards. At about 7 a.m. hot porridge and cocoa was served, and the Scouts returned to civilisation and bed.

H.M.C.

Choral Society

Bookham Choral Society are holding their concert this year on Saturday, 15th March, at 7.30 p.m., in the Church House. The programme will include Dyson's "Canterbury Pilgrims", one of the works set for this season's Leith Hill Musical Festival. The soprano soloist will again be Thelma Godfrey. The tenor and baritone soloists, both members of the Choral Society will be William Jarvis and George Peryer; and the choir will be conducted by A. Langmead Robinson. Admission by programme, price 3s. 6d. and 2s. 6d., from L. R. Neville, "Lone Pine," Lower Road.

HERCULES PHILLIPS RUDGE ● SUNBEAM RALEIGH B'S'A

CYCLES

Easy Terms Available

Taylor's

14 NORTH STREET
LEATHERHEAD

● SPORTS GOODS
● PRAMS TOYS

'Phone: 2431

Mr. Bernard Donner
F.S.M.C. D.Opt.

OPHTHALMIC OPTICIAN

Contact Lenses
Specialist

Hewlins

HIGH STREET,
GT. BOOKHAM.

'Phone: Bookham 67.

The Beckley Health Foods and Herbs

3, New Parade, Bookham

HERBAL REMEDIES
SHELLED NUTS
CAKES and PASTRIES
VEGETARIAN FOODS
COMPOST GROWN
STONE GROUND FLOUR
AND BREAD
The Bread for Health



The Beckley Off Licence

**1 New Parade,
Leatherhead Road,
Great Bookham**

'Phone: BOOKHAM 575.

Wines, Spirits, Bottled Beers,
Minerals Tobacco, Cigarettes

HOURS DAILY 11—2.30. 5.30—10

*Always at your service
In the Shop or at Your Door*

Never be without Drink or
Smoke in the evening

We are open until 10 p.m.

Tel: L'HEAD 2087 Established 1858.

GAS, HOT and COLD WATER FITTERS
PAINTS, OILS, COLOURS, BROOMS
✻ BRUSHES, CHINA and GLASS ✻

BLAKER Bros.

**9, CHURCH STREET,
LEATHERHEAD.**

ELECTRICIANS
SANITARY ENGINEERS
PLUMBERS, FURNISHING
& GENERAL IRONMONGERS
Lawn Mowers Ground and
Repaired
GARDEN TOOLS

COAL

COKE

LORRIES ALWAYS FOR HIRE

HOWARD WEALE

**STATION ROAD,
BOOKHAM.**

**Anthracite
Boiler Fuel**

'Phone:
BOOKHAM OFFICE 244
and
DEPOTS 2655

MILTON CAFE

Luncheons & Teas
Homemade Cakes
Parties catered for
OPEN ON SUNDAY

**LITTLE BOOKHAM
STREET**

'Phone: Bookham 3049

BOOKHAM GIRL GUIDES

The Bookham Girl Guide Company is sustaining a loss in the resignation of its Captain, Miss B. M. Loveless, who has left the neighbourhood.

Miss Loveless was first a Ranger in Bookham, then she became Captain of the 1st Effingham Company, and joined the 1st Bookham Guides in 1940. During these years she has made Guiding her chief hobby. Her careful work with the Bookham Guides has recently been especially rewarded, for a member has gained the Queen's Guide Award, the first to be won in the district. The 1st Bookham Guides will cherish many memories of jolly camps and happy meetings, and Miss Loveless will be missed both by her girls and her fellow Guiders.

A new Captain is urgently wanted, and also someone to help run the 3rd Bookham Brownies. May I ask any ex-Guides, or people interested in the Guide movement, who would be willing to give up a few hours every week for these worthwhile jobs, to get into touch with me. Offers of help will be warmly welcomed. (Miss) P. Bartholomew, The Cottage, Clinton Road, Leatherhead.

Garden Society

It is good news that the Bookham, Effingham and Fetcham Garden Society is to continue in being. At a special meeting on Friday, 11th January, the following Officers were elected: President, the Hon. D'Arcy Lambton; Hon. Sec., Mr. J. H. Stephens; Hon. Treasurer, Mr. J. S. French; Hon. Auditor, Mr. C. T. Fisher.

COMPTON MACKENZIE: SUCCESS PROFILE

by Ian Coster



1 Great Scot, bravely-bearded Compton Mackenzie admits devotion to gramophones and Siamese cats.



2 Sea-soldier... British agent... lover of little islands... famous author... he now pens 'Eastern Epic'.



3 A stickler for the good things of life! Ronson is quite naturally his choice in lighters.



4 His rule for success?
*Believe passionately in what you do
and never spare your effort.*

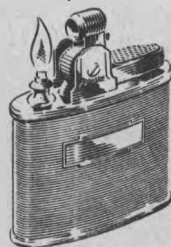
The Ronson Standard, from 38/6, is seen below. Imagine this as a gift *from you or to you*. The most successful gift is a Ronson, jewellery finished, precision built. There are over 60 designs including table lighters... a Ronson to suit every personality and every home!

BIRTHDAYS

ANNIVERSARIES

PRESENTATIONS

*press, it's lit...
release, it's out!*



give a

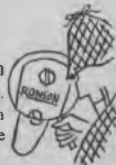
RONSON

World's Greatest Lighter

elementary, my dear - Ronson

Many lighters try to be like Ronson. For your own protection, be a detective, turn the lighter upside down - look for the trade mark

RONSON



MITCHELL CAR HIRE

Day & Night Service

NORDELPH
SOLE FARM RD.
GT. BOOKHAM

Tel: Bookham 2991.

W. FINCH

& Co.

Haulage & Removal
Contractors

Estimates Free

COAL - COKE - HAY
STRAW and other farm
produce merchants :

Eastwick Rd., Bookham.

'Phone: Bookham 163.

BOOKHAM COMMUNITY ASSOCIATION

Impressions of the A.G.M.

It was a friendly, pleasant A.G.M. Entering the Old Barn Hall—warm, well lit and with a buzz of conversation to a background of soft music—one felt immediately at home.

Now the President—rubicund, scholarly, with the firm but gentle bearing of one who has spent his life in the relief of suffering—takes his seat, the music stops and the meeting begins.

Highlight of the Annual Report is the record of the “Midsummer Night’s Dream” performance at Polesden Lacey; this was not only an artistic triumph but also a financial success, from which the Association benefited to the extent of £339. We learn from the Honorary Treasurer’s report (a model of conciseness this) that the Association has a credit balance of no less than £449. But we must not rest on our laurels, for in spite of the improvement in the overall position, “total income” fell by £105 during 1951, and we are faced with a “dollar gap” which must be closed by reducing expenses or finding new sources of income. One possibility, the collection and sale of waste paper, is already being tried out; to date half a ton has been forthcoming, and the target is 10 tons by the year end (see page 14).

The election of officers comes next. The President (Dr. N. E. Waterfield), the Honorary Secretary (Mr. E. E. Oldershaw), the Honorary Treasurer (Mr. L.

Hansford) and the Honorary Auditor (Mr. W. G. Stephens) are unanimously re-elected, as is the Vice-President, Mr. C. V. Brayne. Here the progress of business receives a check as Mrs. E. Harrison, vigorous and persuasive as ever, urges the election of Miss B. Micholls as a second Vice-President. All being in favour, away we go again and have soon disposed of the election of the representatives of individual members, with the following appointments; Mrs. M. Brazier, Mrs. N. Cox, Miss V. Martin (subject to consent), and Messrs. C. J. Beddous, G. Everett, S. J. Hart, R. H. J. Kepple and F. B. Street. This is followed by a new appointment—Mr. S. E. D. Fortescue as Honorary Solicitor, and we agree to recommend Miss J. Findlay to Council as a most suitable choice for the new post of Assistant Secretary.

There follows discussion of future activities—square dancing, a Saturday “hop” for the young people, an aquarists’ group and a chess club. A vote of thanks to the Officers and Council, and especially to Mr. C. J. Beddous, the able but self-effacing Chairman of the Executive, brings to a close an evening memorable for its abundant evidence of the vitality of the Association.

ERRATUM

Apologies to Gilmais Pool for a misprint in their advertisement in the December, 1951, issue of the *Bulletin*. The adult charge for a Season Ticket to Gilmais Pool for 1952 should have been shown as 37s. 6d.

BOOKHAM IRONMONGERS

(Late WYVENHOE STORES)

EVERYTHING
FOR **HOME**
AND **GARDEN**

**J. W. BELLINGER, LEATHERHEAD RD.,
BOOKHAM.**

Tel.: BOOKHAM 491.

BOOKHAM GRANGE HOTEL

LITTLE BOOKHAM

Facing the Common. 5 mins. Station

Proprietress: E. L. Buckmaster

OPEN TO NON-RESIDENTS

For all Meals. Excellent Cuisine

Home Produce - Poultry Etc.

- LICENSED
- PERSONAL SUPERVISION
- RE-FURNISHED. RE-DECORATED

Excellent Bedrooms - Central
Heated - Private Parties - Dances
and Wedding Receptions

Delighted to quote you for any function.

PUTTING ● TENNIS ● TELEVISION

Phone: Bookham 2742-3

BROOMFIELD SCHOOL OF SHORTHAND GREAT BOOKHAM

Learn to write **PITMAN'S SHORTHAND**
correctly and well at high speeds.

Evening Classes are conducted by **ALAN
KNIGHT, F.I.P.S., F.C.T.S.**, Supervisor of Studies, Pitman's
College, 154 Southampton Row, London, W.C.1.

BEGINNERS' CLASSES start every September,
January and April.

SPEED CLASSES (50 — 80 w.p.m. : 90—120
w.p.m.) may generally be joined at any time.

PROSPECTUS from: Alan Knight, Broomfield,
Howard Road, Great Bookham. Tel.: Bookham. 2436.

TAXI!

Tel.: BOOKHAM 458.

●
*TAXI and CAR HIRE
SERVICE*

DAY and NIGHT

4 & 7 Seater Limousines

●
F. C. BELLOWS

GUILDFORD ROAD,
BOOKHAM

National Savings

National Savings are of great importance to our economic position at the present time, and we therefore appeal to our readers to support the Bookham Ward of the Local Savings Committee, especially during the Special Week which that Committee are holding from the 15th to the 22nd March. Particulars from Mr. R. H. J. Kepple, Riddlesdale, Station Road, Bookham.

Surrey Philharmonic Orchestra

Kathleen Riddick conducts the Orchestra for their Beethoven Concert at the Crescent Cinema, Leatherhead, at 2.45 p.m. on Sunday, 9th March. Soloist: Cyril Smith. Prometheus Overture; Emperor Piano Concerto; Eroica Symphony. Tickets 7s.6d. to 2s.6d. from the Crescent Cinema during normal hours of opening.

"NEW OWNERSHIP"

Elwyn Stores

Proprietor . . . A. G. FRANCIS

Mann's Bottled Beer
Wines and Spirits

Provisions & Groceries
of the Finest Quality

Delicious Cream Ices

GUILDFORD ROAD
BOOKHAM

Telephone - Bookham 229

B.C.A. CLUB NEWS

Gramophone Club

An excellent inaugural meeting was held at the Barn Hall on the 13th February, when the high-fidelity reproducing equipment, purchased with the aid of a grant from the Community Association, was in action for the first time. A provisional Committee was formed with Mrs. G. Everett (Brandreth, Sole Farm Road) as Honorary Secretary and Mr. P. A. Ball as Chairman. Meetings are to be held on alternate Wednesdays at 8 p.m., the next one being on the 8th March. Members will be invited to lend records, which may be of either light or classical music. There is no age limit to membership of the Club.

Diama Group

The Community Association's Drama Group held its annual meeting on Friday, 11th January, when Mrs. E. Harrison was re-elected chairman, Miss S. Kennard Hon. Secretary and Mrs. L. Stanley producer. The group is a small but enthusiastic one, and new members (especially men) will be welcomed any Friday evening at the Barn Hall at 8.15 p.m.

Old-Time Dance Club

The Club continues to flourish under the direction of its instructress, Mrs. Benham, and with the guidance of the Honorary Secretary, Mrs. C. T. Burberry (1 Pretoria Cottages, Lower Road, Great Bookham). The Instruction Class meets at the Church House at 7.30 p.m. on alternate Wednesdays (5th and 19th March,

2nd and 16th April, 14th and 28th May). Dances will be held at the Church House from 7.45 to 11.45 p.m. on Saturdays, 5th and 19th March, 2nd and 16th April, and 14th and 28th May. New members warmly welcomed.

The Open-Air Stage

The Council of the Community Association has decided to push on with plans for another performance on the open-air stage at Polesden Lacey during the summer. Approaches have already been made to the Leatherhead Amateur Dramatic Society and the Surrey Philharmonic Orchestra. Further details in our next issue.

Can

BOOKHAM

Support its own weekly newspaper?
Not yet, but we have the matter in mind. Meantime the

COBHAM RECORD and MID-SURREY COUNTRY NEWS

Gives more news, sport and pictures of Bookham than any other newspaper.

53 HIGH STREET, COBHAM.

Tel.: Cobham 3291.

SHOP AT

SAYERS

High-Class Bakers
Confectioners and
Grocers # # #

Daily Deliveries

CAKES made to order

STATION ROAD,
GT. BOOKHAM.

Tel: Bookham 310.

ESTATE AGENTS

Messrs **WILLS & SMERDON** F.A.L.P.A.

6, STATION PARADE,
OCKHAM ROAD SOUTH, EAST HORSLEY.

Have numerous applicants seeking properties in BOOKHAM and surrounding districts.

Our representative will be pleased to call and advise best price obtainable. No commission payable unless sale completed to purchaser introduced by us.

Tel.: EAST HORSLEY 3333 (3 lines).

Little Bookham Village Hall

The Hall with Platform, Piano and Canteen facilities is available for Periodical or functional letting.

Suitable for . . .

Wedding Receptions
Parties — Meetings
Private Dances
Dancing Lessons
Lectures. Music Practices

MODERATE CHARGES

Apply: G. H. Buckmaster,
Bookham Grange Hotel,
Little Bookham—Tel.: 2742-3

Walk in Please Walk out Pleased

at the

— **BOOKHAM** —

Hairdressing Saloons

J. & L. McDONALD

Leatherhead Rd., (Bus Stop)

Tel.: BOOKHAM 2675.

Qualified assistants

in all departments

REASONABLE PRICES

Telephone:
Bookham
2982.



CORNER HOUSE RESTAURANT

**DOWNSWAY
GREAT BOOKHAM**

Morning Coffee, Luncheons,
Afternoon Teas, Grills

Homemade Cakes to order.
Lyons' Ice Cream.
Parties Catered for.

SPORTS NEWS

Bookham Cricket Club

The new season will open officially on the 3rd May with a home fixture against Balham United Services. Forty other matches are to be played during the summer, and 26 of these will be at home. Evening practices are expected to begin on about the 22nd April, and to continue every Tuesday and Thursday throughout the summer. There will probably also be a trial match on a Sunday before the start of the season. The Club hopes to increase its playing membership this year, and would-be new members will be welcomed at these practices or by the Honorary Secretary, Mr. L. W. Denning, of 48 Middlemead Road, Great Bookham (Bookham 3091).

Home fixtures, 1952.—May 3, v. Balham United Services; May 4, v. Westborough; May 10, v. Epsom Municipal Offices; May 17, v. Auriol C.C.; May, 18, v. North Cheam; May 25, v. City and South London Railway; May 31, v. Hogsmill; June 8, v. R.A.F. Association, Ealing; June 14, v. Guildford Technical College; June 15, v. B.B.C. 11; June 28, v. Cheam Village Parish; June 29, v. Old Dorkinians; July 5, v. Ripley; July 6, v. Meadowbank; July 12, v. Epsom Municipal Offices; July 13, v. Bramley; July 27, v. Effingham; August 4, v. Balham United Services; August 16, v. Pyrford; August 17, v. Reigate Municipal Offices; August 24, v. R.A.F. Association, Ealing; August 31, v. Berrylands; September 7, v. Sutton High School Old Boys; September 14,

v. Ewhurst; September 21, v. North Cheam; September 28, v. Rotherfield.

Bookham Football Club

So far (to the 9th February) the Intermediate League side have done well. They played 15 League matches, winning 11 and losing four, and lasted until the Third Round of the Surrey Junior Cup and the Second Round of the League Challenge Cup. Their League goal average is 57—32; in five Cup matches they have scored 19 goals against 11. The leading scorers are Don Durban (19 goals), Ted Ayres (12), and Peter Durban (11). Only "Joby" Doyle has appeared in every match for the First XI so far.

The Reserves, who include some half-dozen exceedingly promising young players between 16 and 18 years of age, have played eight Dorking and District League games, of which two have been won, four drawn and two lost; 20 goals have been scored against 19. The Reserves departed from both the League Challenge Cup and the Dorking Charity Cup after matches with Dorking British Legion.

Bookham Stoolball Club

The Club begins its home programme this season with a match against Shere on the 4th June. Other home fixtures so far arranged are: v. Southwater, 26th June; v. Holmwood, 2nd July; v. Peaslake, 7th July; v. Balcombe, 27th July; v. Coldharbour, 6th August; v. Gomshall, 3rd September.

Practices are held every Wednesday evening during the summer, beginning on the 7th May.

The Honorary Secretary (Mrs. A. G. Martin, "Omira", Leatherhead Road) will be glad to hear from any lady who would like to join the club.

Youth Council Tennis Club

For the coming season the Bookham and Effingham Youth Council Tennis Club has had the kind permission of the National Trust to use the court at Polesden Lacey. If you are under 25 and wish to join the Club, please write to Mr. J. Knight-Barnard (Hon. Sec.), Mavis Bank, Lower Road. Subscription (about) 7s. 6d. A meeting for would-be members will be held at the Co-operative Hall on Thursday, 17th April, at 8 p.m.

It is hoped to arrange a visit to the Centre Court at Wimbledon this summer provided the Club secures sufficient support.

GILMAIS TENNIS CLUB

A few vacancies exist
and players are requested to contact the
Secretary at —

Gilmais, Great Bookham.

Telephone : 271.

Upholsterer

Furniture Remaking
Recovering and
Repairing.

Loose Covers and
Curtains.

Mattress Remakes

Carpet Repairs and
Alterations.

S. F. REYNOLDS

OLD VICTORIA HALL,
EAST ST., BOOKHAM.

Telephone: Bookham 2923

All types of Car Repairs
executed by experienced
mechanics.



Engines Re-bored on
the premises with the
'ARGYLL' Boring Bar

GAU & LAWES GARAGE

H. E. GAU, A. M. Inst. B.E.

Leatherhead Rd., Gt. Bookham.

PRIVATE HIRE SERVICE



Batteries charged and Re-plated
Secondhand Cars Bought & Sold
Tyres Remoulded & Vulcanised

Breakdown Services. ● Car Insurances

A.A. Agents



Tel.: BOOKHAM 234

'PHONE: BOOKHAM 152

Shop at the
Bookham Stores

Prop: **H. E. DRAKE**

For *Finest* GROCERIES &
Quality PROVISIONS

.....
Coffee a Speciality
Ground as you wait
.....

High St., Gt. Bookham.

**R. W. SCOTT
& SON**

**Builders Decorators
Undertakers**

(Private Rest Room)

Works:

Guildford Road, Effingham.

Tel: Bookham 2166.

Private Address and Night Calls

Lynncote, Howard Rd.,
Gt. Bookham.

Tel: Bookham 312

M. A. Perry

DRAPER

* * *

Noted for Baby Linen
Hosiery - Lingerie
and Knitting Wools.

* * *

**High Street,
Bookham.**

Telephone 2509

BUILDERS MERCHANT

P. M. CLACK

LEATHERHEAD ROAD

'PHONE: BOOKHAM 246.

**Timber, Cement, Sand,
Ballast, Ashes, Lime
Glass, Ironmongery Etc.**

Supplied in any Quantity

**Plumbing & Decorating
Materials Stocked**

LORRY FOR HIRE

FURS

*have them renovated and
cleaned now.*

*Remodelling a speciality
at reasonable prices*

Customers waited upon

S. POLLINGER

**65 Portsmouth Road,
Guildford.**

'Phone: Guildford 66727.

THE BOOKHAMS BULLETIN

**Income and Expenditure Account for the year ending
September, 1951**

<i>Expenses</i>			<i>Income</i>		
	£	s. d.		£	s. d.
Printing, four issues	96	1 6	Balance brought forward from previous year	1 8 2	
Cost of blocks for illustrations	5	6 7	Fees for advertisements for the four issues, December, 1950, to September, 1951	108 0 0	
Typing and duplicating services	2	1 5	Advertisement fee paid in advance (Ronson) for December, 1951, issue	1 10 0	
Stationery	1	16 4	Donations	1 19 9	
Postages and receipt stamps	2	11 10½			
Balance, being profit for the year (including £1 10s. paid in advance)	5	0 2½			
	£112	17 11		£112	17 11

Notes.—(1) Ronson's advertisement contract is from March to December issues.

(2) See December, 1950, issue for previous year's Balance Sheet.

OUR PAPER DRIVE

The cost of running the Old Barn Hall last year exceeded the income to meet it, leaving a gap of about £100. With rising prices for coke, electricity, gas, etc., this gap will tend to widen in the coming year, despite the strictest economy, unless additional sources of income can be found.

To bridge this gap we do not want to appeal for money, but we do want to appeal for PAPER in the form of newspapers, magazines, or, if you have them, books. We will collect as soon as you have 10 lb. or more. Write or telephone the Hon. Secretary at "Upalong", Guildford Road (Bookham 241).

BOOKHAM ORGANIZATIONS

Official, address, telephone, meeting place, time, all refer to Bookham unless otherwise stated. Asterisk denotes affiliation to the Bookham Community Association.

CHURCH, ETC., ORGANIZATIONS

Brotherhood. E. C. Hall, Elsenham. Lower Rd. Tl. 412. Congl. Ch., 1st Sun., 3.0.

***Congl. Ch. Guild.** H. H. Semken, Berberis, The Park. Congl. Ch. Hall, Thurs., 8.0.

Friends, Society of. W. T. Cooper. The Croft, Dowlans Rd. Tl. 2256. Co op. Hall, 2nd & 4th Suns., 11.0.

Mothers' Union. Mrs. Jacob, Wood cote. Tl. 2699. Ch. Hse., 2nd Thurs., 3.0.

PORTER & SMART

(C. F. SMART.)

Auctioneers. Estate Agents. Surveyors.
& Valuers.

QUALIFIED AGENTS FOR THE DISPOSAL OF ALL
TYPES OF PROPERTY THROUGHOUT SURREY.

Cochrane House, Church Road, Great Bookham.

Tel: Bookham 3181.

BIRCH & GOTT

Electrical Radio and
General Engineers

BOOKHAM

PHONE 318

Complete Electrical
Installations

Everything Electrical always in stock
Expert and Personal Attention

LET US QUOTE YOU

AUDITIONS — EXAMINATIONS

WITH CONFIDENCE

VOICE TRAINING

including phonetic coaching (Italian, French, German)
invaluable to professional singers and others studying
Operatic roles, LIEDER, etc.

PIANOFORTE PLAYING

STANDARD or RHYTHMIC

Specialised Lessons for Adult Beginners
NEW !! Children (5-7) Preparatory Course.
(Write for particulars)

FEEs REASONABLE CHILDREN from £1 ls. Term

PROFESSOR LEGRAND

Seaforth, Blackthorne Rd., Gt. Bookham.

Established over 50 years

J. Stemp & Sons

Boot & Shoe Repairers

Saddle & Harness Makers

High Street, Gt. Bookham.

Dealers in all kinds of Leather
Goods, Cases, Bags, Trunks and
anything in Leather Repaired
on the premises. Brooms,
Brushes and Garden Tools, Dog
Collars and Leads stocked and
made to order.

A Post card will receive
immediate attention.

St. Nicolas Ch. Council. P. Fogden, Bonnymuir, Childs Hall Rd. Tl. 2897.
St. Nicolas Club. Miss Clack, Malveen, L head Rd. Tl. 246. Ch. Hse., Mon., 7.0.
St. Nicolas Folk Dancers. R. Lambert, Fowre Wynds, Hale Pit Rd. Tl. 2206. Ch. Hse., Sat., 5.0.
White Crusaders (Christian Spiritualists). Co-op. Hall. Thurs., 6.30.
Services & Healing. Enquiries Mrs. Wootten, 1 New Parade. Tl. 575.
Women's Congl. Fellowship. Miss Cripps, Charmdene, Kennel Lane, Fetcham. Tl. 454. Congl. Ch. Hall, Wed., 3.0.
Women's Fellowship. Mrs. Edkins, The Small House. Tl. 187. Ch. Hse., Mon., 2.30.
Women's Own. Miss Hull, Ewhurst, Groveside. Tl. 191. Baptist Hall, Mon., 3.0.
Young Wives' Group. Mrs. Waldoek, Lynwood, Sole Farm Rd. Tl. 2065.
Youth Fellowship (Congl.) Seniors: C. T. Collins, St. Edward, Crabtree Lane. Congl. Hall, Sat., 7.0. Junior Girls: Miss Hall, Elsenham, Lower Rd. Tl. 412. Congl. Hall, Mon., 7.0.

SPORTS CLUBS

Badminton (Ladies). Mrs. Lambert, Fowre Wynds, Hale Pit Rd. Tl. 2206.
Bowls. R. T. Rowley, Wilford, Blackthorne Rd. Tel. 2974. Ladies: Mrs. Saunders, Naldera, Groveside. Tl. 2827.
Cricket. L. W. Denning, 48 Middlemead Rd. Tl. 3091.
Football. D. A. Durban, 12 Station Rd.
Junior Sports (Co-operative). Mrs. Davies, Rose Marie, Howard Rd. Tl. 3093. Co-op. Hall, Tues. & Wed., 7.30.
***Rifle.** O. Rattenbury, Latchingdon, Dorking Rd.
Stoolball. Mrs. Martin, Omira, L'head Rd.
Table Tennis. Miss Benn, Fetcham Holt, Lower Rd. Tl. L'head 3706.
Tennis Clubs:
 Lt. & Gt. Bookham. Mrs. Street, Craig, Eastwick Rd. Tl. 2798.
 Gilmais. A. M. Lee, L'head Rd. Tl. 271.

*Youth Council: John Barnard, Mavis Bank, Lower Road.

OTHER ORGANIZATIONS

British Legion. F. Shrubshall, Ricasoli, Orestan Lane, Effingham. Tl. 3141. Club, day & evg., Legion Hall.
Buffaloes, Royal Antediluvian Order, Louis Kerr Lodge. R. W. Scott, Lynncote, Howard Rd. Tl. 2166. Old Crown, Tues., 7.30.
***Camera Club.** Mrs. Stephens, Mansfield, Orestan Lane, Effingham. Tl. 2758. The Croft, Ch. Rd., Fri., 7.45.
***Choral Society.** L. R. Neville, Lone Pine, Lower Rd. Tl. 2075. Congl. Ch. Hall, Tues., 8.0.
Commons Committee. L. R. Hutchison, Maddox Farm. Tl. 47.
Conservative Associations:
***Gt. Bookham.** H. G. Carter, The Spinney, The Park. Tl. 2703.
 Lt. Bookham. Mrs. Haslett, The Cottage, Foxmead. Tl. 184.
***Co-operative Education Committee.** Mrs. Harrison, Common End, Eastwick Dve. Tl. 2702.
***Co-operative Guild (Women's).** Mrs. Cox, Theldor, Keswick Rd. Tl. 2706. Co-op. Hall, Thurs., 3.0.
Film Society (Mid-Surrey). C. J. Beddous, Micklehamway, Downsway. Tl. 3032.
Garden Society. J. H. Stephens, Roselea, Sole Farm Rd. Tl. 3026.
Gilmais Club, L'head Rd. A. M. Lee. Tl. 271. Full club facilities.
***Labour Party.** L. J. Penegar, 1 Water Lane. Co-op. Hall, 1st Mon., 8.0.
***Women:** Mrs. Stimpson, 17 Sole Farm Av.
Local History Society. A. T. Ruby, 53 Nutcroft Grove, Fetcham. Tl. L'head 3127.
Model Engineering Club. R. J. Collins, Roslyn, Blackthorne Rd. Toc H Hall, L'head, alt. Tues., 7.30.
National Savings. W. Young, Grange Cottage, Maddox Lane. Tl. 3067.
Nursing Assn. Mrs. Emuss, The Hermitage. Tl. 80. (District Nurses. Tl. 347.)
Pig Club. A. Botten, Ivydene, Downsway. Tl. 2484.
***Poultry & Rabbit Club.** E. C. Wyatt, Cumnock, Eastwick Dve. Tl. 585. Co-op. Hall, quarterly.
Residents' Assn. F. Cooper, Frantina, Keswick Rd. Tl. 360.
***Women's Club (Lt. Bookham).** Mrs. Owen, 4 Oakdene Road.

***Women's Institute.** Mrs. Bell, Trevean, The Park. Tl. 2640. Ch. Hse, last Thurs., 2.45.

***Women's Total Abstinence (National) Union.** Mrs. Hall, Elsenham, Lower Rd. Tl. 412. Congl. Hall, 2nd Tues., 3.0.

Youth Club (Bookham & Effingham). Mrs. Johnson, The Orchard, Manor Hse. Lane. Tl. 2332. Village Hall, Mon. & Thurs., 7.30.

Youth Council. E. E. Thornton (Youth Organizer). Tl. Epsom 4316.

HALLS AVAILABLE FOR LETTING

Church House, Lower Road. W. A. Davey, Roylands, Lower Rd.

Co-operative Hall, Leatherhead Rd. Manager, Co-operative Stores. Tl. 218.

***Little Bookham Village Hall.** G. H. Buckmaster, Bookham Grange Hotel. Tl. 2742.

Old Barn Hall, Ch. Rd. E. E. Oldershaw, Upalong, Guildford Rd. Tl. 241.

JUNIOR ORGANIZATIONS

Boy's Brigade. D. E. Shipley, St. Gallen, The Ballands, Fetcham. Baptist Hall, Mon., 7.25.

***Girl Guides:** Mrs. Pelling, Beckley, Cott., L'head Rd. Tl. 2796. Scout Hall, Fri., 6.30. (Brownies, Wed., 4.30.)

Girls' Life Brigade. Mrs. Palmer, The Lodge, Randalls Rd., L'head. Tl. 2776. Baptist Hall, Thurs., 4.0 (Cadets), 6.0 (Juniors), 7.15 (Seniors).

Life Boys. Mrs. Palmer (see last above entry). Baptist Hall, Mon., 6.0.

***Scouts:**
 Gp. Scoutmaster: D. Cameron, Noremac, Dowlans Rd. Tl. 2599.

Scoutmaster: B. Charles, Allandale, Dawnay Rd. Tl. 3153. Scout Hall, Wed., 7.15.

Cubmaster: Miss Attawell, Rosemary, Lr. Rd. Tl. 176. Scout Hall, Mon., 4.45.

COMMUNITY ASSOCIATION

Hon. Secretary. E. E. Oldershaw, Upalong, Guildford Rd. Tl. 241. Social activities include Drama Group and Badminton, Old Time Dancing, Over 60's, Over 20's, and Table Tennis Clubs.

TO OBTAIN
THE FINEST SELECTION
OF

FROZEN FRUIT

AND

CREMIER

ICE CREAM

GO TO

ameron's

5H STREET, Gt. BOOKHAM

FRANCES

from Madam Dee, late of New Bond St., W.

Ladies' Outfitters

Furs Cleaned & Re-modelled
up-to-date

Aristoc, Oxford, Bondor and
other makes of Stockings :
LOCAL SOLE AGENTS for
PULL FRONT CORSETS
We specialise in ALL SIZES
LINGERIE AND GOWNS :
SPORTSWEAR Latest Styles.

Church Road, Bookham.

W. A. Woodford

Stationer and Bookseller
Printing, Die Stamping
Fancy Goods
Confectionery
Cigarettes and Tobacco



LIBRARY

Gt. BOOKHAM
POST OFFICE

'Phone : Bookham 11

Funeral Order office for
Longhurst (Undertakers) Ltd. Epsom

W. RILEY

COVEHITHE
POULTRY FARM

EASTWICK DRIVE, GT. BOOKHAM

Accredited Breeding Station S.R. 36.

Silver Cup and other Laying Trial Awards

Breeds: LIGHT SUSSEX & R.I.R. X L.S.
CHICKS HATCHING EVERY MONDAY

ay old Pullets, 35/- doz. Day old Cockerels 10/- per doz.
rowing Pullets, 8 weeks old, 11/- each, 12 weeks old, 14/- each.
Growing Cockerels, 8 weeks old, 6/6 each.

one: Bookham 414.

Established 25 years

RANGERS

H. Ranger (1935) Ltd.

COAL, COKE

AND

BOILER FUEL

MERCHANTS

CHURCH Rd.

Gt BOOKHAM

'Phone : Bookham 106

BOOKHAM FISHERIES

Manager: W. GARDENER

High class Fishmongers and Poulterers

OPEN EVERY DAY

8 a.m. — 5 p.m.

Wed. 8 a.m. — 1 p.m.

COCHRANE HOUSE,
CHURCH RD., GT. BOOKHAM.

CALL OR PHONE: 57.

*Obtain your Fish, Rabbits and Poultry,
from a Modern Hygienic Store.*

DAILY DELIVERIES
. . . . PERSONAL ATTENTION

Fresh Supplies each day from Coastal Markets

LEATHERHEAD THEATRE CLUB

High Street.

Phone: 2852

EVERY WEEK THE
LEATHERHEAD REPERTORY
COMPANY PRESENTS
A FIRST CLASS PLAY

EVENINGS at 7.30.

MATINEES

Wednesday & Saturday at 2.30

Prices: 5/-, 4/-, 3/-, 1/6.

Special terms for parties.

Annual Subscription: 2/6.

Television with a Difference !

The famous **BAIRD** portable T.V. receivers require no aerial in this district, so why not have one demonstrated without obligation— by your local **BAIRD** agents :

J. B. Evershed & Son

Radio, Television & Cycle
Dealers

WOODLANDS Rd.,
Lt. BOOKHAM.

We are also the local agents for **PHILLIPS** cycles & our fully equipped T.V. radio & cycle repair depts. are at your service.

Phone : Bookham 2225

Tel: Leatherhead 2442 - 3

Established 1856.

C. BRIDGER & SONS

(DOUGLAS N. CLOUTTE, F.R.I.C.S., F.A.I.,)

Chartered Surveyors & Chartered Auctioneers & Estate Agents

Qualified Specialists in the disposal of Houses of all sizes in this district.

Local Offices of Woolwich Equitable Building Society and Agents for all Principal Insurance Offices.

26, High Street,
LEATHERHEAD.