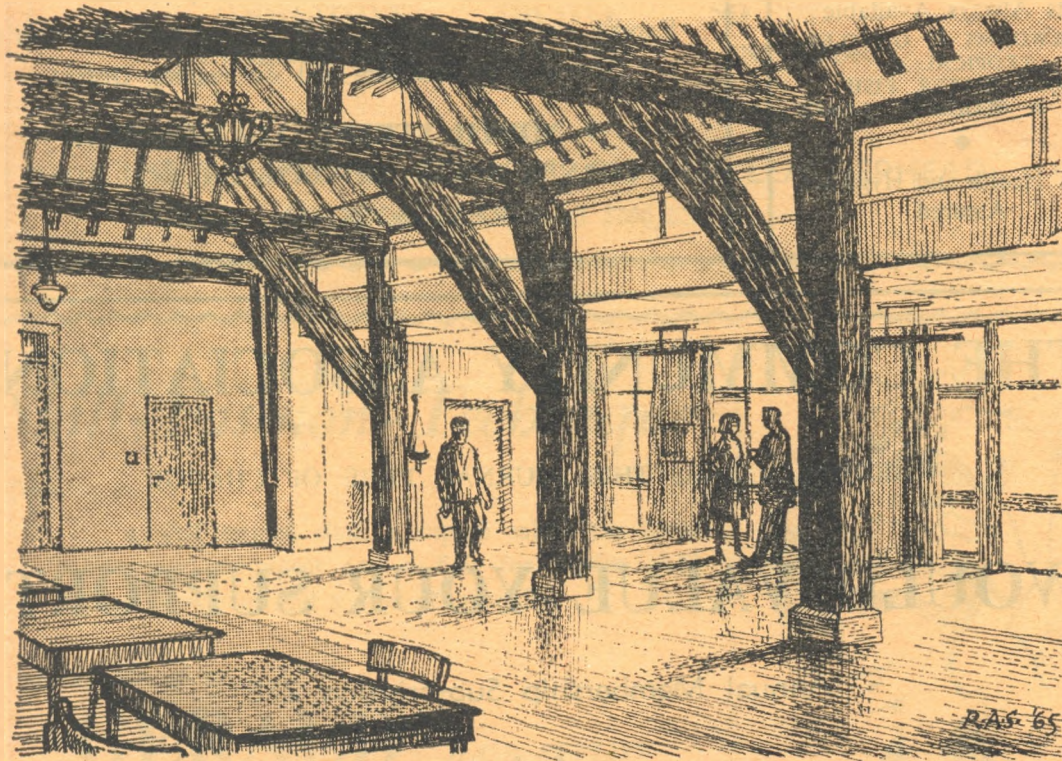


The Bookhams Bulletin

Quarterly Journal of the Bookham Community Association



LEATHERHEAD & DISTRICT
LOCAL HISTORY SOCIETY

No. 133

Sept. 1967

34th Year

**BOOKHAM
PET SHOP**

**BARDOLIN HOUSE
CHURCH ROAD
GREAT BOOKHAM
Tel. BOOKHAM 4928**

●
Pets Always Available
MEALWORMS & GENTLES
TROPICAL &
COLD WATER FISH
POTS & BEDDING PLANTS

●
Pets' Health and Hygiene
Assured

Office Hours: 9 a.m. - 6 p.m.

Tel.: Bookham 2207/8/9, Leatherhead 4101/2

PORTER & SMART

**SURVEYORS, AUCTIONEERS, HOUSE,
LAND AND ESTATE AGENTS**

Valuation for Probate and all purposes.

Experts with local knowledge in dealing with all forms of
Property in Bookham and surrounding District.

**7 NORTH STREET, LEATHERHEAD
CORNER HOUSE, OPPOSITE CHURCH ROAD,
GREAT BOOKHAM, SURREY**

THE COMMUNITY ASSOCIATION

WHICH PUBLISHES THIS JOURNAL FREE OF CHARGE

WOULD VALUE YOUR SUPPORT

Annual Membership Subscription 2/6

Apply:

MRS. B. OLDERSHAW, 99 LITTLE BOOKHAM STREET, BOOKHAM 2241

Leatherhead Urban District Council

INVEST IN LEATHERHEAD LOCAL BONDS

COMPETITIVE **TRUSTEE** **NO COST TO**
INTEREST RATE **SECURITY** **INVESTOR**

Apply to:
THE TREASURER, COUNCIL OFFICES, LEATHERHEAD
(Phone Leatherhead 2266/Ex. 2)

Skill-Fashion-Technique

Take . . .

. . . a well trained staff, a superb salon, the latest
hairdressing equipment and a flair for service. Add
fashion knowledge and a dash of ingenuity.

—it all adds up to . . .

GERALD *HAIR STYLIST*
5a HIGH STREET :: BOOKHAM
Tel. 2526



**H. R. RICHMOND LTD.
MOTOR COACHES**

37 SOUTH STREET
EPSOM
Phone: 25252

Departures from the Crown Hotel:
Three-Day Inclusive Coach Tours
Express Services to the South Coast
Day and Afternoon Tours of Interest
Private Hire for all Occasions
(12, 29, 37, 41, 45 & 52-Seater Coaches)

*
Local Agents:
MARSH, NEWSAGENT, LOWER RD.
LYONS, NEWSAGENTS, GUILDFORD RD.

M. A. PERRY

DRAPER

* *

Noted for Baby Linen
Hosiery — Lingerie

Stockists for
Ballito & Cook's of St. Paul's
and Templeton's, Ladyship and
P.B. Wools

* *

**HIGH STREET
BOOKHAM**

Telephone 2509

TIMBER & BUILDERS'
MERCHANT

P. M. CLACK

& SON LTD.

LEATHERHEAD ROAD

Tel. Bookham 5246

**Timber, Cement, Sand,
Ballast, Lime, Glass,
Ironmongery, Chlorate
of Soda, Plywood and
Hardboard, Roof Felt**

Supplied in any quantity

Plumbing and Decorating
Materials Stocked

FRANCES

* * * * *

From Madam Dee, late of New Bond Street, W.

LADIES' OUTFITTERS

Furs Cleaned and
Remodelled up-to-date

Specialists in O.S. Gowns
Aristoc, Kaysor Bondor
and other makes of
Stockings.

Local Sole Agents for
Pull Front Corsets.

We specialise in all sizes
Lingerie and Gowns,
Sportswear, latest styles
Model Skirts.

CHURCH ROAD, BOOKHAM

Tel. BOOKHAM 2645

**THE SPINNEY
NURSERY SCHOOL**

MERRYLANDS FARM, GREAT BOOKHAM

Registered by Surrey County Council

This is a modern nursery giving pre-school training to children aged 3-5 years—run on Froebel lines

Prospectus from:

MISS LINDAY
THE SPINNEY NURSERY SCHOOL
MERRYLANDS FARM
CHURCH ROAD
GREAT BOOKHAM

Tel. Bookham 2084

Tel. BOOKHAM 2980

**J. CHITTY
& SON**

High-Class

Butchers

& Poulterers

**THE GROVE
BOOKHAM**

and at Dorking

Buying a Dog?

PEDIGREE

Longhaired Dachshunds

Puppies of various ages for sale from prizewinning parents. Healthy, affectionate, sweet temperaments. Used to children

DOGS AT STUD

Mrs. R. Simmonds
Jack and Jill Nursery
214a Lower Road
Great Bookham
Phone Bookham 4367

VICTORIA FURNISHINGS

HIGH STREET, BOOKHAM

Carpets Supplied and Fitted

Curtains and Loose Covers

Divan Beds and Bedding

All Soft Furnishings

Sunway Blinds

Occasional Furniture

Telephone: Bookham 2923

*For your weekend
relaxation . . .*

The Surrey Advertiser

*Your County Paper
with all the local news
plus 2,000 small
advertisements*

Every Saturday

Fivepence

J. A. ZEBEDEE

37 HIGH STREET

Gt. BOOKHAM

Phone: Bookham 2671

For Good Class
CHOCOLATES & SWEETS
SUCHARD LINDT
TOBLER
ELIZABETH SHAW

CASSELDEN'S NEETANDKWIK

Shoe Repair Service

LONG SOLING A
SPECIALITY

•
22 CRABTREE LANE
BOOKHAM
Tel. 2434

The Bookhams Bulletin

Quarterly Journal of the Bookham Community Association

No. 133

Sept. 1967

34th Year

To all B.C.A. Members

COMMUNITY ASSOCIATION A.G.M.

BARN HALL, 8.15 p.m.

THURSDAY, OCTOBER 26th

AGENDA

Reports.

Election of Officers.

Election to Council of Representatives of Individual Members.

Present members: Mesdames Cuddeford, Edwards, Godwin.

Messrs. Catt, Cuddeford, Freeman, Harrison, Larkin, Rombach, Stockwell, Woodrow-Clark, Dr. Sowerbutts.

(Nominations for Officers and Representatives may be submitted in advance to the Hon. Sec., 61 Eastwick Drive).

General Business.

A SHORT HISTORY OF BOOKHAM PART III

By JOHN HARVEY, F.S.A.

Domesday Book was not a census, and it is impossible to use its figures to provide a close estimate of the population, but, allowing some five or six members to each household, one may suggest a total population for Great Bookham of some 200 to 250, and of Little Bookham about 40 or 50 souls. Gunfrey's free land in Bookham may have been the nucleus of the later subordinate manor of Eastwick; Halsard was almost certainly the ancestor of the Hansard family, who continued as immediate lords of Little Bookham until the end of the thirteenth century.

Little remains of the Bookham seen by the Domesday surveyors of 1086. The landscape has been utterly changed, and only part of one building remains: the windows and a little walling from the early Norman church of Great Bookham. These windows were found in 1913 by the late Philip M. Johnston, above the later north arcade of the nave. This arcade was inserted in an existing wall, to avoid demolition. The church in its original form was about 50 feet long by 20 feet

B.C.A.

AUTUMN DANCE

7.45 p.m. — Barn Hall

Music by George Davies

Saturday, October 7th

Tickets from Dr. J. Sowerbutts and Mr. W. Rombach

Showrooms:
1 DORKING ROAD
EPSOM 23901



Works:
18 WATERLOO ROAD
EPSOM 25257

THE FRIENDLY AGENTS

NEW
AUSTIN
MORRIS
TRIUMPH
M.G.
RILEY
RENAULT
DISTRIBUTORS
CITROEN
AREA AGENTS
HILLMAN

USED
CARS

A GOOD SELECTION ALWAYS
IN STOCK

PART EXCHANGES

LOW INTEREST

HIRE PURCHASE

PRIVATELY FINANCED

FACTORY-TRAINED
MECHANICS

CRYPTON MOTORSCOPE

For 'AFTER-SALES' Service

DRIVING LESSONS

ROYAL AUTOMOBILE CLUB APPROVED INSTRUCTORS
"NERVY PUPIL SPECIALISTS"

wide, and covered the nave of the present church from the Tower to the Chancel Arch; there may have been a small square or apsidal chancel to eastward. The coloured patterns on the reveals of the eastern window, even though they may not date from the 11th century, are the earliest work of decorative art so far found in Bookham.

In Norman times the church was served by a rector; Chertsey Abbey did not appropriate the advowson until 1292, when the old rectory became the vicarage. Thus from the 13th century, and very possibly from the 7th, the parsonage house of Bookham stood on the same ground as the "Old Rectory," recently demolished. This house itself dated only from the early years of the 19th century; in 1933 it was sold by the church authorities, who bought the present rectory. Little Bookham Manor House (now Manor House School) probably stands on its Domesday site, but the old Manor House of Great Bookham, on a site between Park View and Fife Close, has disappeared and so has Slyfield Mill which lasted into the 19th century. But we may be sure that most of the plots on either side of the High Street have been inhabited for over 1,000 years.

Something of the aspect of the Bookham countryside in the 11th century can be pieced together from later sources, and though we must not picture a static village where nothing ever happened, the same essential features

remained constant from the time of Domesday, and indeed earlier, until the close of the 18th century. The ancient parish fell into certain natural

VILLAGE DAY

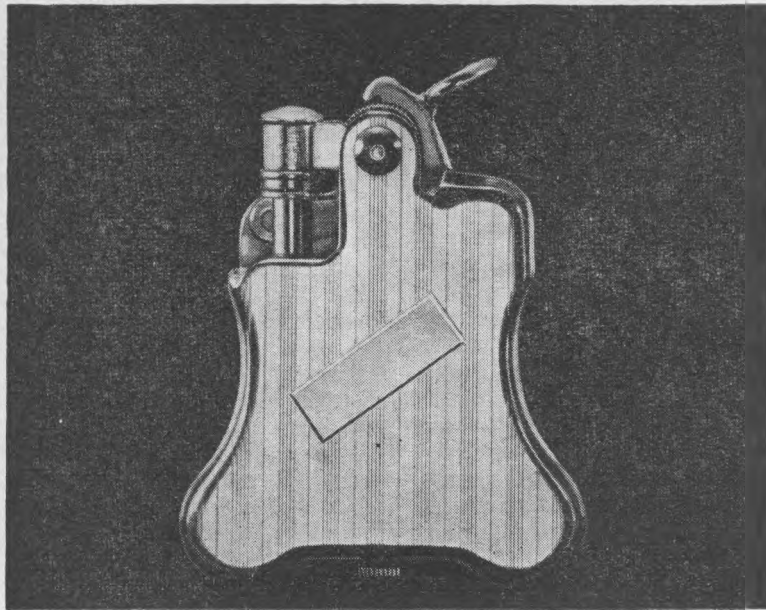
Village day has come and gone, leaving behind a pleasant memory of a fine day and a happy concourse of people out to enjoy themselves. Families and young people were much in evidence — indeed, the teenagers came in greater numbers than ever before to sample the evening barbecue and the music of the Bianca's Hands' Group. Punch and Judy (Mr. George Sapwell) fascinated the small children who also had their own Corner, provided and manned by the Eastwick Parent Teacher Association. Parents and fellow-pupils must have been very proud of the team of young gymnasts from the Howard of Effingham School who gave a brilliant display, loudly applauded by a big crowd. The Fire Brigade of the Kingston C.E.G.B. Power Station, although cramped for room in the back field, still managed to show off their expertise as well as their sense of fun in an entertaining demonstration. So pleased were they with the friendliness of the occasion that they have asked to be informed of the date of next Village Day so that they can come as visitors with their families.

The Army Careers Exhibition by the Royal Green Jackets had a constant file of admirers, handling the guns and other equip-

ment and asking quite technical questions. So often it seemed that the younger the inquirer, the more 'with it' the question. We were delighted that Sgt. Turner, of the Green Jackets, carried away from the Raffle a small memento of the occasion in the form of a Beach Lilo.

Practically all the local women's organisations were able to enter the Exhibition in the Barn Hall which was visited by close on a thousand people. The garments from the School of Stitchery and Lace and the church vestments from the Corpus Domini Convent were examples of superb needlecraft and embroidery. The W.I.s showed so many excellent hand-made objects that one was dazzled by their attractiveness and variety. Five local pre-school play groups combined to illustrate the activities that children, ready for stimulus outside the home environment, can enjoy in planned, informal groups. These are just a few of the exhibitors: many others provided stands indicating the interests and work of their members in the spheres of social service, religion, hobbies and recreation. Much interest was shown in the individual demonstrations of various arts, including that of the Flower Arrangement Group, who had previously given much time to the composition of eye-catching floral arrangements in various parts of the Hall.

The Camera Club provided excellent photographs of women



It all started with the Banjo (as illustrated) in 1927
 This was the first automatic lighter the world had ever seen. It made 'lighting up' a good deal easier. It also led to the development of our Varaflame gas lighter, the most advanced the world has known. We've been in the making-it-easier business ever since. Not just with lighters. With anything that can stand improving, revamping or just plain old-fashioned inventing.

Today, Ronson does a lot more than light cigarettes.
 We make top-rated electric razors for men and for women . . . a great range of hairdryers . . . an automatic toothbrush . . . 'Oily Bird' household oil. And lots of other interesting things.

'Who knows where it will end?' After all, Ronson started out with one modest ambition: to improve on the match.



RONSON PRODUCTS LIMITED, LEATHERHEAD, SURREY

Make a note to phone or call . . .

V.I.P.

OFFICE ACCESSORIES CO.
 for TYPEWRITERS and ALL
 OFFICE EQUIPMENT

Stockists for
 Quality . . .
 Carbons . Ribbons
 Duplicating Supplies
 Photographic Supplies
BURPHAM HOUSE
HIGH STREET
BOOKHAM
Bookham 4848

Nothing too much trouble
 You name it, we get it

DRY CLEANERS !

Tel. Bookham 4815

—●—
3-DAY SERVICE
COLLECTION AND
DELIVERY

—●—
TAILORING REPAIRS
 also
HOUSEHOLD AND
CARPET CLEANING

—●—
D. & A. H. Barkham
39 CRABTREE LANE
GREAT BOOKHAM

in the shops, in their clubs and with their children. In all, this was a composite picture of a village in which work and play are well balanced, in which the needs of young and old are met, and where "the Women of Bookham are both gay and feminine as well as useful and intelligent."

Awards for the best-presented Stall were: First — Toy Stall — Dramatic Society. Second—Cakes — Gt. Bookham Evening W.I. Other stalls were Bottles provided by the Old Tyme Dance Club; Bric-a-Brac, a real money spinner, organised by the Scottish Dancers; Produce, always well patronised, manned and equipped by the Afternoon W.I.; Tombola, which did a roaring trade, staffed by the Over Sixties; Good as New, the regular contribution of the Friends of Leatherhead Hospital. Women members of the B.C.A. were busy with the refreshments. The Guides, always a great help on these occasions, did well with their hot dogs. Organisations who helped with the sideshows were the Youth Club, the Little Bookham Evening W.I., the Catholic Women's League, the Scouts, the Gt. Bookham Evening W.I., and a host of willing individuals.

To all the many organisations and individuals who helped to make the Day such a success we express our warm appreciation. We also thank our local traders and firms whose generous gifts made possible our takings of close on £450. They are:—

Ronsons, Ashe Laboratories, Dewhurst, Coombs, Camp, Sally Ann, Reeves, Old Crown Stores, James, Heather, Absalom, Marsh (Thrush), Gardners, Reynolds, Co-op Dairy, Co-op Bakery, Co-op Grocery, Frances, Pearce, Cripps—Fishmonger, Cripps—Pet Shop, Walker Smith, Dunkey, Elizabeth, Old Windsor Castle, Bookham Grange, the Crown, the Anchor, the Oak, Capel, Bookham Granaries, Cut Crystal, Bookham Ironmongers, Sayers, Weale, Sheila — Hairdresser, Chitty, David Fuller, Walnut Tree Cafe, the Long House, Hylands Garage, Runmore, Williams, Clarks, Whaley, Bungalow Stores, Mitchell, Petherbridge, Gray - Wilson, Home Counties Dairies, Bradbeer, Clatworthy, Perry, One Day Cleaners, Roberts, Frost, Eve, Hewlins, Zebedee, Walker, Cynthia, Hall, Spencer Cleaners, C. J. Fox.

Results of Village Day Raffle
Record Player. 2122. Marchington.

Hotplate. 3017. Phyl.
Tea Set. 5616. Jones, Twelve Acre Close.
Fan Heater. 1900. Book. 3946.
Blanket. 4150. Bullard.
Cut Glass. 4320. Davies.
Book. 4991.
Gin. Mrs. Pullen, Middlemead.
Basket Fruit. 4131.

Mrs. Turkettle, Newenham Rd.
Supamuff. 3360. T. E. Tufton.
Saucepan. 4328. Cliff, Maddox Lane.

Pipe. 5213. Queally, Middlemead.

Tools. 2086. Frost, S.W.9.

Wool. 2086. Mrs. Bartlett.
Soap and Talc. 5622. Braidwood, Twelve Acre Close.
Car Aerial. 3237. Bunting, Sidcup.
Cleaning Voucher. 2177.
L. Harris.

Shampoo and Set. 3613. Carpenter, Orchard Annexe.

Lamb. 3494. Marshall.

Beach Lilo. 8330. Sgt. Turner.

VILLAGE WEEK

The response to this, our third Village Week, was so enthusiastic that it is clear that it has come to stay. There was something to please all tastes and consequently a pretty good cross-section of the village came to one or other of the events. The combined Youth Service on the Sunday was well attended and the simple service, conducted by the Ministers of St. Nicolas, the Congregational Church and the Baptist Church, ensured full participation by the young people. The Youth Club put on a typical evening with records, refreshments and games. The Barn Dance Ceilidh was different this year because it included the Silver Family Folk Singers. The Old Tyme Dance Club welcomed visitors to their open evening. The Flower Show, the first to be organised by the Bookham Flower Arrangement Group, exceeded in popularity all expectations. Entries had to be limited because of space and there was a constant stream of visitors all during the afternoon and evening to admire the feast of colour and perfume. Many awards were achieved by mem-

RUNMORE GARAGE

(West Surrey Motors Ltd.)

Your Local Agents for

MORRIS :: HILLMAN :: HUMBER :: SUNBEAM

COMMER :: MORRIS COMMERCIAL

Any make of New Car supplied

SALES and SERVICE

CRYPTON TUNING

WANDA WASH — The self-service car wash
with that cleans under the
hot, softened wings as well
water

2/6 — 7 minutes — USE IT TODAY!

GUILDFORD ROAD

LITTLE BOOKHAM

Telephone: Bookham 5230 and 3017

bers of the Group, but non-members were also successful in some of the classes. The award for best exhibit of the show went, appropriately, to Mrs. M. Camp, Chairman of the Flower Arrangement Group.

Tickets for the Old Time Music Hall were sold out long before the day. Mr. James Hanley (father of Jimmie Hanley), as compere, invited and secured full audience participation. The Youth Fellowship of the Baptist Church, in most engaging costumes, contributed a cycle of Viennese songs, while the Women's Own, in ravishing Edwardian dresses, sang a variety of the popular old tunes of the period. The Can-Can Girls (we believe they were Rangers!) got the evening off to a good start with their typical dance which

never fails to arouse envy in older hearts by its zest and charm. Items contributed by members of the Dramatic Society were well received and the soloists, singing the much-loved tunes of a former generation, were loudly applauded.

The Barn Hall, attractively decorated by Mrs. M. Strand, was filled to capacity for the Midsummer Dance organised by the B.C.A. Social Committee.

Finally, despite the heavy rain, the Stoolball Tournament was played and Bookham retained the Cup, defeating the semi-finalists, Merrow, by a narrow margin.

Complete figures are not yet available but it is estimated that Community Association funds will benefit by over £100 from the Week's activities. For this

we are most grateful. We say to those organisers, who were handicapped by lack of space and no stage, that we propose to transfer this money to our fund for much-needed extensions to our present hall.

WHAT SHALL WE DO? AUTUMN ACTIVITIES

For most of us the holidays are over, the evenings are closing in and, if we have any spare time, we are looking for something interesting to do in the autumn. A wide range of activities is available, some of which are listed below. At the end of the Bulletin is a Directory of local organisations which will always welcome new members.

The Howard Centre for Further Education. Although it has been necessary to delete twenty-six classes from the proposed programme owing to a shortage of money, the Centre is offering an even wider range of courses for the session 1967-8. In addition to the regular classes the following new ones will be available: Elementary Spanish; A Hostess Course; Appreciation of Wine; Your House — Improvements and Extensions; Piano Playing for Beginners. Two new day classes will be held at the Barn Hall: Bridge for Beginners 1.30 to 3.30 p.m., and Dressmaking and Soft Furnishing 9.30 to 11.30 a.m., both on Mondays.

A number of new Clubs have been formed, and the social amenities — canteen, film shows, dances, visits, etc.—will continue. The election of new officers for

DISTINCTIVE

WEDDING

PHOTOGRAPHY

J. C. FULLER

6 DAWNAY ROAD, GREAT BOOKHAM

Bookham 2748

A Reverent and Comprehensive Service

The need for careful funeral arrangements comes, as a rule, very suddenly and it is then that you require not only personal advice, but immediate attention to your wishes . . . With complete confidence you can entrust every detail of the arrangements in accordance with these wishes. . . .

HAWKINS & SONS

Funeral and Cremation Service

Private Chapels of Rest

2 HIGHLANDS ROAD

(Next to Parish Church)

LEATHERHEAD

Day and Night Service:

Telephone: Leatherhead 2435 Bookham 3242

the Students' Council will take place in the new session. Enrolments will be at the Howard of Effingham County Secondary School, Lower Road, on Monday, Tuesday and Wednesday, 11th, 12th and 13th September. 7.00-9.00 p.m. Classes will begin in the week commencing 18th September.

Further details are available from the Principal, Mr. G. F. Scoble, "The Chase," Guildford Road, Effingham.

The Square and Folk Dance Club meets on the first and third Monday of the month at the Congregational Hall at 8 p.m. This type of dance is rapidly gaining in popularity. It was the Bookham club which took a major part in the organisation of the National Folk Week event in May when the Thames Valley Morris Men, the Thames Valley Dancers and local dancers, all in National Costume, danced through the streets of Leatherhead from the Bull to the Leatherhead Parish Church Hall for an evening of Sword, Rapper and Morris Dancing, when over 200 attended. If the Barn Hall had been free we would have had the pleasure of watching this on our own doorstep. We hope that it will be possible to have it another year.

The Choral Society has just completed its 40th season and is in good heart after winning the full-chorus item in the Leith Hill Musical Festival and consolidating its position in the Advanced Division. The main work last

season was Schubert's Mass in A flat and a local performance was given in March at St. Nicolas Church in aid of the Feed the Minds campaign.

The season was extended to permit the participation with the Ashted and Leatherhead Choral Societies in a performance of "Messiah" on behalf of the same fund. The Society also joined in a rendering of Haydn's "Creation" in Guildford Cathedral.

Practices begin again at the Congregational Hall on September 19th and will continue every Tuesday throughout the winter from 8—9.30 p.m. The music chosen includes works by Delius and a Bach cantata. Singers should enrol at one of the first few practices.

B.C.A. CLUBS

Camera Club. The opening meeting of this lively club is on Thursday, September 14th, at 8 p.m., at the Bookham County Junior School. It will be an informal occasion with viewing of holiday snaps and colour slides, discussion on the new programme and exchange of ideas; it should provide an opportunity for prospective members to find out, over a cup of tea, whether it is in their line. Thereafter, meetings will be held weekly at the same place and time.

The publicity officer, Mr. T. G. Fraser, has sent us a chatty description of the Club which we have pleasure in printing.

Bookham Camera Club came of age in 1967. During the past twenty-one years, when it met

first at Mrs. Kleboe's and later at the Barn Hall before it moved to the School, it has seen many changes. Old friends have moved. New faces have appeared to replace them. Furthermore, the club is thriving and membership expanding—due, not a little, we feel, to the Annual Exhibition held in the Barn Hall. More visitors signed the book this year than in any other since the fifth!

It is hoped that this trend will continue and, for this reason as much as any other, the committee tries to pack each year's programme with interest and variety. The social side is to be extended with items like wine and cheese parties and outings in which wives, husbands and families of members can participate.

We feel sure that there must be a number of amateur photographers (or even interested raw beginners) in the district who are not even aware of the club's existence. Maybe there are others who, though aware of its existence, assume (quite wrongly) that it consists of fuddy-duddies and other freaks who band together in tight little cliques. To these we say—Come along and see for yourselves! We like to think of ourselves as normal, run-of-the-mill people, ready to welcome you and make you at home.

Readers may be interested to know that the panel of prints, under the heading of Women of Bookham, in the Village Day Exhibition was contributed by the club. Members also went along

(Continued on Page 18)

TO ALL ROAD USERS

ARE YOU UP-TO-DATE?

Does **every** Road Sign mean something to you? Or are you too lazy to learn and rather trust to luck or to the know-how of the other person to avoid that crash?

STOP ACCIDENTS

BE WITH IT AND LEARN THE NEW TRAFFIC SIGNS **NOW**. KNOWLEDGE BRINGS PEACE OF MIND TO YOU AND OTHERS.

Booklet, illustrated in colour, from any stationer, price 6d., or free from:

LEATHERHEAD ACCIDENT PREVENTION
COUNCIL

RED HOUSE ANNEXE
BULL HILL, LEATHERHEAD

Jack & Jill Nursery

for

CHILDREN AGED 2-5

At 214a LOWER ROAD

GREAT BOOKHAM

(registered and approved by
Surrey C.C.)

Established 1948

Mornings 9.15-12.15 and
Monday & Thursday 2-4.30 p.m.

Apply to Mrs. R. SIMMONDS
TEL. BOOKHAM 4367

Cyril Lord

CARPETS

Over 250 Patterns

SCULPTORED COURTESSA
ENKALON
DESIGNED ENKALON
COURTESSA

ALL PRICES INCLUDE
FREE LAYING

Your local consultant will
call

Phone BOOKHAM 4255
EVENINGS AFTER 6 P.M.
and WEEKENDS

HERRIOT ASSOCIATES LTD.

Incorporated Insurance Brokers

"The duty of an Incorporated Insurance Broker is to arrange the right insurance for his clients in the best market. He is not tied to any one insurer, and this makes his advice specially valuable.

"He also provides a continuing service and help with claims negotiations. His services normally cost the client nothing, as he receives brokerage from the Insurance Companies with whom he places the business."

Enquiries regarding all classes of Insurance invited.

9 THE STREET, ASHTEAD

Tel. Ashtead 6441/2

E. E. DUNKEY

LIMITED

4 Grove Corner
BOOKHAM

Tel: Bookham 3293



PHOTOGRAPHIC EQUIPMENT



Dispensing Chemist

GIFTS

*all the
year round*

o o o o o

Agents for

**DOROTHY GRAY
YARDLEY
REVLON
INNOXA
HARTNELL
OLD SPICE**

*and other
proprietary brands*

R. W. SCOTT & SON

**Builders
Decorators**

Works:

Guildford Road, Effingham
Tel. Bookham 2166
Private Address:
106 Woodlands Road
Little Bookham

5 minutes from Bookham Station

BED AND BREAKFAST OR WEEKLY TERMS

Bookham Grange Hotel

(BOOKHAM GRANGE HOTELS LTD.)

BOOKHAM COMMON

LUNCHES 12.30 - 2 DINNER 7.30 - 9.30

SUPPER LICENCE . GOOD FOOD

Ballroom available for Wedding
Receptions, Private Parties, Dinners, etc.

We Specialise in Outside Catering at
Local Halls or Private Parties



Resident Director: W. H. J. Sale

Phone: Bookham 2742/3

David Fuller

5 CHURCH ROAD

BOOKHAM

Tel. Bookham 4710

Men's Outfitters

Abbeygate Clothing, Y-Fronts, etc.

Ladies', Gents', Children's Shoes

START-RITE, LOTUS, TUF, DURAFLEX, ETC.

P. & M. MITCHELL

DOMESTIC HARDWARE & IRONMONGERY

TOOLS — PAINTS — WALLPAPERS — GARDEN REQUISITES
LAWN MOWERS AND SHEARS GROUND — KEY CUTTING
PINK PARAFFIN

★ PERSONAL ATTENTION ALWAYS ★

45 CHURCH ROAD, GREAT BOOKHAM

Phone Bookham 3824

Telephone
Bookham 3013

Cynthia's

Ladies', Children's & Baby Wear
Sirdar, Wendy & Studley Wools
Hosiery, Gloves & Haberdashery

5 GROVE CORNER
GREAT BOOKHAM

CAR HIRE

LOCK and
GALLAGHER

CHAUFFEUR-DRIVEN CARS
FOR ALL OCCASIONS

WOODHATCH
GILMAIS
BOOKHAM
PHONE 3242

BAYSWATER NURSERIES

(N. M. YOUNG)

GREENACRES (Off Eastwick Park Avenue)

GREAT BOOKHAM

Tel. Bookham 3206

CUT FLOWERS

GLADIOLI

DAHLIAS

CHRYSANTHEMUMS

FLOWERING POT PLANTS

HOUSE PLANTS

PEAT

JOHN INNES COMPOST

FRESH VEGETABLES

OPEN

Monday-Saturday 9-1 and 2.30-5 p.m. Sunday 10-1 p.m.

to the Flower Show in Village Week to take photographs of the exhibits and have secured some good colour prints. T. G. F.

The Flower Arrangement Group meets monthly on the first Monday in the month at the Barn Hall at 2.30 p.m. In August there was a garden meeting at the home of Mrs. Medland. A coach outing to Sunningdale Nurseries is planned for September. All those who attended the Flower Show will be aware of the high standard of the club. Yet it is only three years old, and few of the members had any previous experience. Classes are arranged for those who would like them and the novice very quickly acquires the skills of recognising and placing both flowers and foliage. Practice gives confidence. Over and above the personal pleasure derived from this art, there is the stimulus and fun of entering the competitions which have become quite a feature of monthly meetings. Visitors are always welcome. On October 2nd, Mrs. M. Sargent will demonstrate "At Home in Autumn," the Competition is "Flowerless Beauty." On November 6th "Ikebana" is the subject chosen by Mrs. M. Hodgson, the Competition being "For a Dull Corner."

The Youth Club meets every Monday evening at the Barn Hall. It is a relaxed, friendly occasion with records, table tennis, etc., and the occasional Group. Mrs. Weaver, the new Leader, is arranging activities and

outings at the request of members on other occasions during the week. The Club re-opens 11th September.

The Scottish Dancers have entered teams in a number of large district festivals during the summer and have won a series of awards. The first Dance of the season will be at the Barn Hall on September 15th, and thereafter weekly. This club has a large membership and will welcome the extra space which will be made available when the second Extension goes up—in the not too distant future. Their donation of twenty-one guineas to the B.C.A. funds will be earmarked for the building, as well as the handsome profit they made on the bric-a-brac stall.

The Old Tyme Dance Club has had its annual general meeting. Mr. R. Catt continues as chairman but Mr. R. H. Pimm has resigned the secretaryship after serving the Club enthusiastically for a number of years. He is succeeded by Mr. E. Dodgson, of Fife Way. Like the Scottish Dancers, the Old Tyme Dance Club is well supported and needs a larger hall. They have been working for this for some time and, to this end, they have donated £40 to the B.C.A. as well as the record profit made on the Village Day Bottle Stall.

The Over Sixties is a club that never closes down. During June they had a most enjoyable outing to Brighton. Lunch was provided. The cost was met mainly from members' donations, more of

these being expendable this year on small treats because of the generosity of the L.U.D.C. in assisting with the rent.

Also in June the Club was entertained by the Afternoon W.I. which made a pleasant break from cards and bingo which is the staple activity of the members.

A birthday party to celebrate Mrs. Bellow's birthday is being arranged for October.

The Gramophone Club meets alternate Thursdays at the Barn Hall, commencing 7th September, and is pleased to have Ralph Nicholson, A.R.C.M., present their first programme. Mr. Nicholson is well known in Bookham and elsewhere in Surrey for his activities as Conductor and Composer. The second programme (21st September) is being given by Mr. Swetman, of Leatherhead, whose knowledge of recorded music is voluminous. Bookham Music Club joins with the Gramophone Club on 5th October in presenting a lecture, illustrated with records, on the works of Kodaly and Bartok. The Club welcomes and has plenty of room for new members.

OUR NOTEBOOK

Our Young Academics. Howard Medland, who is a graduate in English of the University of Wales, has gone to Norway for a year of teaching. After taking his Diploma in Education he was asked by the British Council to take this post, possibly as a result of a few weeks he spent in the last Long Vacation with a

Do You Realise That

£60,000

Has Been Paid To Our Members This Year In

DIVIDEND AND INTEREST

During the last 21 years this Society has paid its members profits amounting to £1,090,115

Do a Good Deal Better by
Shopping at

**GUILDFORD and DISTRICT CO-OPERATIVE
SOCIETY LTD.**

LEATHERHEAD ROAD, GREAT BOOKHAM
NORTH STREET, LEATHERHEAD

CHARRINGTONS

for

Solid Fuels

and

Mobil Fuel Oils

Free advice given on all aspects of central heating

15 HIGH STREET
GREAT BOOKHAM :: SURREY
Tel. Bookham 4049 and 2655

MRS. N. C. WOLFF'S

**LEATHERHEAD
SECRETARIAL
SCHOOL**

28 BRIDGE STREET
LEATHERHEAD

Tel. Leatherhead 2401

**A COMPLETE
SECRETARIAL
TRAINING**

INDIVIDUAL TUITION
Duplicating, Typewriting
and all Secretarial Services

group of Russian teachers staying in Britain.

Mr. and Mrs. L. S. Hughes are proud parents—and justifiably so. They recently had the pleasure of going up to Liverpool University to see their two elder children receive their degrees. David, who was a pupil at the Glyn, took a B.Sc. in Geography last year, followed by a B.Sc.(Hons) in Geology this year. Mary, educated at Roseberry, took a B.A.(Hons) in Geography, gaining a thesis-prize for her study of population changes in Kingston and Guildford in the 19th century. She is staying a further year at Liverpool University to take a course in archivism and will probably take a post afterwards in a museum. Old Maps are her main interest. David is taking an appointment on the geological staff of the English China Clay Company at St. Austell.

Barry Tomlins, son of the popular manager of the Bookham Co-op, has successfully completed the Intermediate Exam of the Institute of Chartered Accountants.

Are you a B.C.A. Covenantor? We need many more if we are to carry on with our good work of extending the Barn Hall to meet the growing needs of the neighbourhood. The Association's Hon. Treasurer, Mr. A. Medway, will welcome enquiries.

Mrs. B. Oldershaw will also welcome contributions, 2/6 per annum, from new members and would appreciate offers of assist-

ance as road stewards from people in their own locality.

New Affiliations to the Community Association are reported from the Folk Music Club which meets the 2nd, 4th and 5th Monday in the month at the Congregational Hall at 8 p.m., Residents the Silver Family and Little Ginny. Also from the recently formed Branch of the Bookham Young Conservatives whose numbers are growing so rapidly that they have ceased to meet in the Waterfield Room and have transferred to the Grange Hotel.

Late News. Mrs. M. Hunt, of Oxfam, asks us to thank the people of Bookham who gave so generously to the Oxfam Coffee Morning at the Barn Hall on March 24th. The total valuation of cash and gifts received amounted to £98 13s. 0d.

Bookham Dramatic Society. The play chosen for the next production is "Fools Paradise," which will be performed at Church House on 23rd, 24th and 25th November.

Friends of Howard of Effingham School. Proposals that such an organisation should be formed have received support from the Headmaster and Governors of the School. A meeting will be called early in term to discuss ways and means. For some time now parents and well-wishers of the school have considered that a group of this kind could be invaluable in providing amenities the school badly needs. Stage curtains are a recent example. It

would also constitute a useful link between parents, ex-pupils, staff, evening students using the premises and local people who are interested in the progress of the school.

Obituary. Miss M. Rachel Glover, who died in April, was an indefatigable worker for old people, especially the over-eighties, and, even though she herself was handicapped for a long time with arthritis, she kept up her quiet work until the end. She served on the Old People's Welfare Committee and assisted the Red Cross, of which she was a Divisional Officer, in their own distribution of Christmas presents to old people.

Shortly after her retirement to Bookham (where her parents and sister were living) from the Institute of Cost and Works Accountants, she took over the editorship of the Bookhams Bulletin — a position for which her professional experience was invaluable, succeeding Mr. W. Cooper, who left with his family for Australia. She also joined with him in launching the "Friends of the Elderly," an informal group which visited old people in need, to give them assistance and comfort.

Miss Rachel Glover was 78 when she died. Her elder sister, who is 82, is staying on in their Bookham home. She is remarkably active for her years and continues to work, too, for the Red Cross. Indeed, she was helping them in their Tent on Village Day.

Howard Weale

Bookham's Family Grocer since 1870

LITTLE BOOKHAM STREET

Tel. Bookham 5244

•
SELF-SERVICE AND DELIVERIES
•

No Parking Problems

L. S. HALL

**1 GROVE CORNER
BOOKHAM**

Tel. Bookham 3140

~~~~~  
*Boot and Shoe  
Repairs & Retail*  
~~~~~

GENTS' TAILOR

Repairs and Alterations

Customers' Material made up

DRY CLEANING

G. Wales

Timber Merchants

Bookham 3272 & 4596

Imported Softwoods sawn
and prepared to order

Logs

Larch Poles for Pergolas

Interwoven Fencing

Panels and Posts

Pea and Bean Sticks

Trees Topped and Lopped

INTERIOR FURNISHERS

ambrose

We Specialise in . . .

FITTED CARPETS

FABRICS, FURNITURE

FIRST-CLASS WORKMANSHIP WITH

COMPETITIVE PRICES

103 THE STREET, FETCHAM (Leatherhead 2118)

PARADE COURT, OCKHAM RD. SOUTH, E. HORSLEY

(E. Horsley 3790)

B.C.A. Officers and Clubs

- President:** V. L. Austin, O.B.E.
Hon. Sec.: Mrs. E. Harrison, 61 Eastwick Drive, Bookham 5702.
Hon. Treasurer: Mr. A. G. Medway, 35 The Garstons, Bookham 4967.
Chairman: Mr. V. B. Stockwell, 22 The Park, Bookham 3133.
Membership Sec.: Mrs. B. Oldershaw, 99 Little Bookham Street, Bookham 2241.
Advertisements: J. S. Buckland, 20 Greenacres, Bookham 4471.
Barn Hall Bookings: Mrs. C. B. Medway, 35 The Garston, Book. 4967.
Camera Club: J. A. Carver, 41 Highlands Road, Leath. 4312.
Dramatic Soc.: Mrs. A. Lawrance, 79 Hillside Gardens, Brocham, Betchworth 3059.
Flower Arrangement Group: Mrs. S. McLeod, 11 Allen Road, Bookham 4809.
Gramophone Club: A. Harrison, 61 Eastwick Drive, Bookham 5702.
Over Sixties: Mrs. T. Weston, 50 Keswick Road, Bookham 5706.
Olde Tyme Dancers: E. Dodgson, 2 Fife Way, Bookham 3791.
Scottish Dancers: G. R. Marshall, 63 Eastwick Drive, Bookham 2096.
Youth Club: J. Stemp, 58 Whiteway, Bookham 4143.

BOOKHAM ORGANISATIONS

(Affiliated to B.C.A.)

- Bookham Boys' Club:** K. A. Vincent, 1 Sole Farm Avenue.
Bookham Bowling Club: C. Flowers, Shaldon, Guildford Road, Bookham 4807.
British Legion, Effingham and Bookham Branch: M. S. Pickering, Standardhill, Guildford Road, Effing.
British Legion, Women's Section: Mrs. L. A. Pickering, Standardhill, Effingham, Bookham 5581.

- Bookham Cricket Club:** J. Hubbard, 45 Sole Farm Road, Book. 3874.
Cross Dagers Cricket Club: R. Lovegrove, 9 Humphrey Close, Fetcham, Bookham 3984.
Eastwick Park Cricket Club: B. Aspital, 65 Hazel Way, Fetcham, Bookham 4859.
Catholic Womens' League: Mrs. Lacey-Smith, Travellers Voy, Dirtham Lane, Effingham, E. Horsley 3256.
Choral Society: L. S. Hughes, 2 Blackthorne Road, Bookham 2785.
Conservative Association, Gt. Bookham Branch: J. E. Farrier, 24 The Garstons, Bookham 3986.
Conservative Association, Little Bookham: D. Smith, 15 Twelve Acre Close, Bookham 4162.
Bookham Young Conservatives: Miss K. Meehan, 48 Downsway, Book. 5376.
Labour Party, Bookham Ward: E. H. Churcher, 6 Twelve Acre Close, Bookham 3949.
Liberal Association, Bookham Branch: W. B. White, 46 Sole Farm Avenue, Bookham 4225.
Garden Society: R. C. Wing, 20 Gilmais, Bookham 3687.
Eastwick Allotments and Gardens Association: C. B. Martin, Omira, Leatherhead Road.
Bowls Section—Gillett Sports: C. A. Upton, Bybrook, Sole Farm Road, Bookham 3279.
Bookham Football Club: D. Oliver, 27 Middlemead Road, Book. 4236.
Eastwick Parent & Teacher Assctn.: K. C. Lynn, 32 Hazel Way, Fetcham, Bookham 3875.
Girl Guides, 3rd Company: Mrs. L. Mills, 38 stratchcona Avenue, Bookham 3602.
Girl Guides Local Association: Mrs. J. Spencer, 18 Richmond Way.
1st Bookham Scouts: G. V. Child, 9 Sole Farm Road, Bookham 2147.
2nd Bookham Scouts: E. Tarrington, 4 Dowlans Close, Bookham 2960.

- 3rd Bookham Scouts:** T. R. Holdstock, 41 Crabree Lane, Booknam 4743.
Girls' Life Brigade: Mrs. E. Foster, 1 Riverside, Pixham Lane, Dorking.
Boys' Brigade: L. S. Kay, 13 Nutcroft Grove, Fetcham, Leamernead 4302.
League of Friends, Leatherhead Hospital: Mrs. Dames, 23 Barn meadow Lane, Booknam 4074.
Leatherhead and District National Savings Group, Bookham Ward: Mrs. D. Leonard, 25 Allen Road, Bookham 3432.
Mothers' Union: Mrs. D. Litchfield, 57 The Garstons, Bookham 4008.
N.S.P.C.C.: Mrs. J. Dakin, 8 Sole Farm Road, Bookham 3725.
National Trust, Bookham Commons Committee: Dr. J. G. Sowerbutts, Knaresdale, Church Road, Bookham 3308.
Polesden Lacey Camping Club: Mrs. M. White, 26 High Street, Colner's Wood, S.W.19.
Rifle Club: O. J. Rattenbury, 17 Dorking Road, Bookham 3308.
Bookham Stoolball Club: Mrs. M. Francis, 38 Newennam Road, Booknam 3075.
Folk Club (Music): The Silver Family, The Copse, Fetcham, Booknam 4702.
Square and Folk Dance Club: Mrs. Thomas, 49 The Garstons, Bookham 4607.
Bookham Winemakers Club: Mrs. Shapland, 60 Eastwick Drive, Bookham 2674.
Bookham W.I. (Afternoon): Mrs. Smith, 5 The Lorne, Bookham 3523.
Gt. Bookham W.I. (Evening): Mrs. A. Edwards, 60 Kennel Lane, Fetcham, Bookham 5409.
Little Bookham W.I. (Evening): Mrs. E. Hedges, 3 The Lorne, Bookham 3434.

CRIPPS

Fishmonger and Poulterer

NEW PARADE
CHURCH ROAD
BOOKHAM
Telephone Bookham 4022

FISH at its best.

FRESH SUPPLIES OF QUALITY FISH DAILY
ALSO FINE SELECTION OF FROZEN FOODS
HYGIENE AND CLEANLINESS ASSURED

Home-made Cakes
Anniversary Cakes
Christmas Cakes

THE WALNUT TREE

Morning Coffee
Lunch . Afternoon Tea

*

5 CHURCH ROAD
(Opposite the Church)
GREAT BOOKHAM
Tel. Bookham 3606

*

Closed Sunday and Monday

Home Counties Dairies



Channel Island - Pasteurised
Homogenised - Sterilised
Flavoured Milk and
Fresh Cream Delivered Daily

HOME FARM, Effingham
Telephone: Bookham 5253

68 Church Road
Gt. Bookham
Telephone: Bookham 5345

LEATHERHEAD THEATRE CLUB

HIGH STREET :: LEATHERHEAD

Telephone: Leatherhead 2852/5552

The Leatherhead Repertory Company presents first-class plays with fully professional casts. Season from September to June. Each play runs for three weeks.

For times of performances and prices see local press.
Special terms for parties of ten or over.

Tickets may be purchased only by members of the Theatre Club —
Annual Subscription 2/6.

The Leatherhead Green Room Club is fully licensed and provides meals before and after the show. Details of membership from the Club Manager.
Telephone: Leatherhead 4223

P. J. CAMP

- Stationery, Printing
- Greetings Cards, Fancy Goods, Books
- Toys, Tobacco and Confectionery

Gt. Bookham Post Office
CHURCH ROAD
Phone Bookham 2011

C. CRABTREE (Chemists) LTD.

(C. CRABTREE, M.P.S., F.B.O.A. . L. G. CRABTREE)

Chemists and Opticians

Agents for . . .

● KODAK AND ILFORD CAMERAS & ACCESSORIES

High-Class Toilet Preparations:

COTY . YARDLEY . REVLON

HELENA RUBENSTEIN . OLD SPICE, ETC.

. . . Daily Deliveries

BOOKHAM PHARMACY

9 HIGH STREET . GREAT BOOKHAM

(Tel. Bookham 2067)

and

1 THE STREET, EFFINGHAM (Tel. Bookham 4033)

PIANOS

For the Right "Sound of Music"

TRY

J. E. VINER

Pianoforte Tuner and Repairer

(late of John Broadwood & Sons,
Ltd., W.1.)

who visits the district regularly
Please write to:

**7 Riverholme Drive
West Ewell**

or Tel. 01-393 5904

Before 9 a.m. - After 6.30 p.m.

Elizabeth's

Harrington Baby and
Children's Wear

Dresses by Berkertex,
David Barnes and other leading
Fashion Houses

Skirts and Slacks by Gor-Ray,
Slimma, etc.

Jumpers and Cardigans by Jaeger,
Bear Brand, Eastex, Deanbrae
Lingerie by Leading Makers

Nylons by Bear Brand, Charnos,
Plaza

Foundations by Loveable, Berlei

**26 CHURCH ROAD
GREAT BOOKHAM**

Tel. Bookham 3307

**DOUGLAS
& Company**

F.A.L.P.A.

Incorporated
Auctioneers,
Estate Agents,
Valuers & Surveyors

**8 HIGH STREET
LEATHERHEAD**

Telephone 4136/7

•
Also at
**Ashted, Epsom, Ewell
and Worcester Park**

**DOUGLAS
& Company**

F.A.L.P.A.

ESTABLISHED 1856

C. BRIDGER & SONS

(Douglas N. Cloutte, F.R.I.C.S., F.A.I.)
Chartered Surveyor

(John E. Marchington, F.V.I.)

(Michael T. Hind, F.A.L.P.A.)

(Clive A. Stanford, F.R.I.C.S., F.A.I.)
Chartered Surveyor

★

Consulting Surveyors
Auctioneers, Estate Agents
and Valuers

★

18 CHURCH ROAD, GREAT BOOKHAM

Tel.: Bookham 2182/3

★

Associated Offices also at

Leatherhead . Ashted . Epsom . Tolworth . Guildford
Farnham . Worcester Park . Woking . Godalming
Ash Vale . Ewell . Haslemere . Horsham

Architectural Department: Ashted Office

(J. C. Scrivener, A.R.I.C.S., Chartered Surveyor)