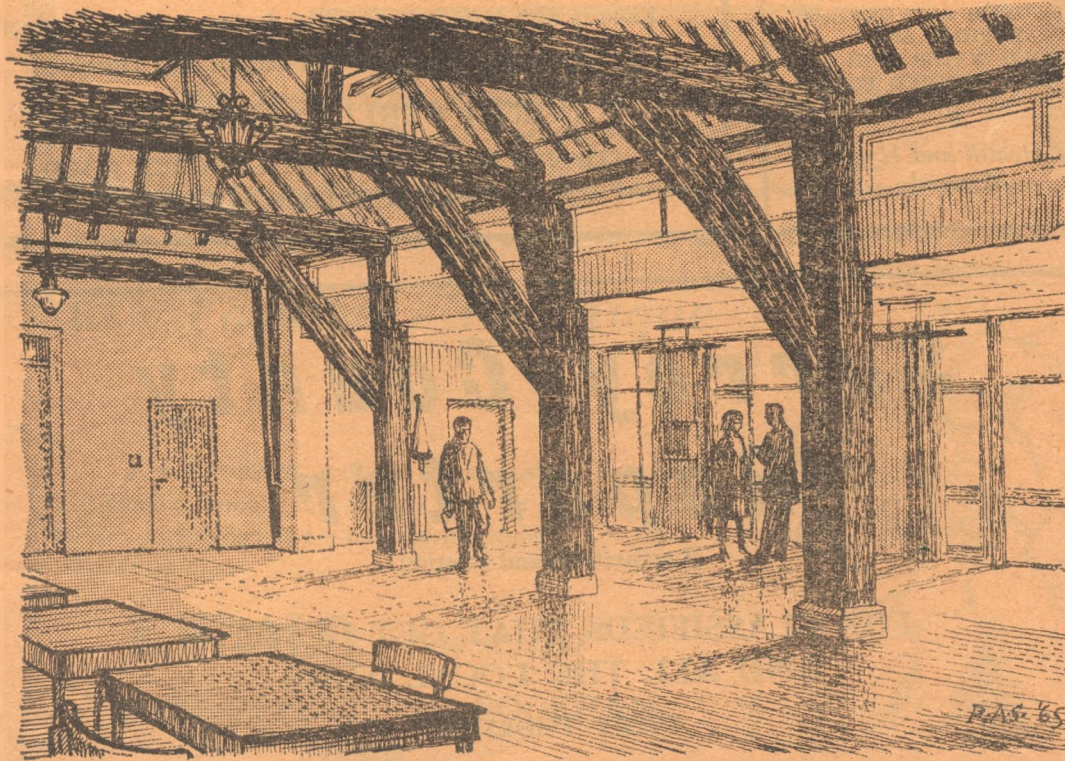


# The Bookhams Bulletin

Quarterly Journal of the Bookham Community Association



LEATHERHEAD & DISTRICT  
LOCAL HISTORY SOCIETY

No 132

May 1967

33rd Year

**BOOKHAM  
PET SHOP**

**BARDOLIN HOUSE  
CHURCH ROAD  
GREAT BOOKHAM  
Tel. BOOKHAM 4928**

•  
*Pets Always Available*  
MEALWORMS AND GENTLES  
TROPICAL AND  
COLD WATER FISH  
POTS AND BEDDING PLANTS

•  
*Pets' Health and Hygiene  
Assured*

Office Hours: 9 a.m.—6 p.m.

Tel.: Bookham 3181 and 4390, Leatherhead 4101/2

**PORTER & SMART**

**SURVEYORS, AUCTIONEERS, HOUSE, LAND  
AND ESTATE AGENTS**

Valuation for Probate and all purposes.

Experts with local knowledge in dealing with all forms of  
Property in Bookham and surrounding District

**7 NORTH STREET, LEATHERHEAD  
CORNER HOUSE, OPPOSITE CHURCH ROAD,  
GREAT BOOKHAM, SURREY**

***Surrey County  
Reporter***

(Leatherhead and District)

**FOR CLASSIFIEDS THAT GET RESULTS  
AND ALL THE LOCAL NEWS**

**EVERY THURSDAY**

*Head Office: CROYDON ADVERTISER LTD., 36 HIGH STREET, CROYDON 2692*

Leatherhead Urban District Council

**INVEST IN LEATHERHEAD  
LOCAL BONDS**

Trustee Security

No Costs to Investors

Send for Application Form and Particulars from  
**THE TREASURER, COUNCIL OFFICES, LEATHERHEAD**  
(Telephone: Leatherhead 2266 / Ext. 2)

*Skill - Fashion - Technique*

*Take . . .*

. . . a well trained staff, a superb salon, the latest  
hairdressing equipment and a flair for service. Add  
fashion knowledge and a dash of ingenuity  
*—it all adds up to . . .*

**GERALD** HAIR STYLIST

**5a HIGH STREET :: BOOKHAM**

Tel. 2526



# H. R. RICHMOND LTD. MOTOR COACHES

37 SOUTH STREET  
EPSOM

Phone: 25252

*Departures from the Crown Hotel:*

Three-Day Inclusive Coach Tours  
Express Services to the South Coast  
Day and Afternoon Tours of Interest  
Private Hire for all Occasions  
(23, 29, 37, 41 and 52-Seater Coaches)

\*

Local Agents:

THRUSH, NEWSAGENT, LOWER ROAD  
LYONS, NEWSAGENTS, GUILDFORD ROAD

# M. A. Perry

DRAPER

\*\*\*

Noted for Baby Linen  
Hosiery — Lingerie

Stockists for  
Ballito & Cook's of St. Paul's  
and Templeton's. Ladyship  
and P.B. wools

\*\*\*

## High Street Bookham

Telephone 2509

TIMBER & BUILDERS  
MERCHANT

**P. M. CLACK**  
& SON LTD.

LEATHERHEAD ROAD

Tel.: Bookham 246

Timber, Cement, Sand,  
Ballast, Lime, Glass,  
Ironmongery, Chlorate  
of Soda, Plywood and  
Hardboard, Roof Felt

Supplied in any Quantity

Plumbing and Decorating  
Materials Stocked

# FRANCES

\* \* \* \* \*

From Madam Dee, late of New Bond Street, W.

LADIES' OUTFITTERS

Furs Cleaned and  
Remodelled up-to-date

*Specialists in O.S. Gowns*  
Aristoc, Kaysor Bondor  
and other makes of  
Stockings.

*Local Sole Agents for*  
PULL FRONT CORSETS  
*We Specialise in all sizes*  
LINGERIE AND GOWNS  
SPORTSWEAR, latest styles  
MODEL SKIRTS

CHURCH ROAD, BOOKHAM  
Tel. BOOKHAM 2645

## **THE SPINNEY SCHOOL**

NURSERY AND PREPARATORY FOR BOYS AND  
GIRLS FROM 3 TO 11 YEARS.

Recognised by the Ministry of Education.

Modern Froebel method of teaching.

Small classes and individual work. Large rooms set in  
spacious grounds. On 418 bus route.

School car available.

*Write for prospectus to:*

The Principal, The Spinney School,  
EASTWICK DRIVE, GREAT BOOKHAM

Tel.: Bookham 84.

TEL: BOOKHAM 2980

## **J. CHITTY & Son**

High-Class

Butchers

& Poulterers

THE GROVE  
BOOKHAM

and at Dorking

## **Buying a Dog?**

**PEDIGREE**

Longhaired Dachshunds

Puppies of various ages for  
sale from prizewinning parents.  
Healthy, affectionate, sweet  
temperaments.

Used to children

**DOGS AT STUD**

Mrs. R. Simmonds,  
Jack and Jill Nursery,  
214a Lower Road,  
Great Bookham

Phone Bookham 4367

# **GOBLIN**

PRODUCTS  
MAKE  
LIGHT WORK  
FOR  
LADIES

Apply: Mr. C. A. Robins  
GOBLIN (B.V.C.) LTD., GOBLIN WORKS  
ERMYN WAY, LEATHERHEAD. TEL. ASHTEAD 6121



*For your weekend  
relaxation . . .*

## **The Surrey Advertiser**

*Your County Paper  
with all the local news  
plus 2,000 small  
advertisements*

**Every Saturday**

**Fivepence**

## **J. A. ZEBEDEE**

**37 HIGH STREET**

**Gt. BOOKHAM**

**Phone: Bookham 2671**

*Confectioner*

*Tobacconist*

*Stationer*

*& Toys*

*Lyons Ice Cream*

## **BINGO**

at the

## **BARN HALL**

8 p.m.

Thursday, March 9th

Thursday, April 13th

# The Bookhams Bulletin

Quarterly Journal of the Bookham Community Association

No 132

May 1967

33rd Year

VILLAGE DAY — JUNE 17th  
to be opened 2.30 p.m. by  
COUNCILLOR S. E. D. FORTESCUE  
Chairman, Leatherhead U.D.C.  
Exhibition—Women of Bookham  
Gymnastic Display—  
Howard of Effingham School  
Punch and Judy  
Barbecue and Group

VILLAGE WEEK  
JUNE 18th — 24th

Sunday—Youth Service Parade.  
Monday—Youth Club Dance.  
Tuesday—Folk Dance and The  
Silver Folk Singers, 8 p.m.  
Wednesday—Open Evening Olde  
Tyme Dance Club, 8 p.m.  
Thursday—Flower Show. Open  
Classes, 2.15 to 9 p.m.  
Friday—Victorian Music Hall.  
Compere: Jimmie Hanley,  
8 p.m.  
Saturday — Village Day Dance,  
Barn Hall, 7.45 p.m.

See posters for times and  
other details.

We have, as our readers know,  
to take our copy for the "Bulletin"  
to press a long time before it goes  
through your letter-boxes. Con-  
sequently, we cannot publish in  
this issue all the details of the  
Village Day and Village Week  
programme. At this stage, how-  
ever, our arrangements are well

advanced and we can promise the  
village a very good day. The  
sideshowes are much improved but  
we are still open to receive offers  
from volunteers prepared to man  
them. The Barn Hall and grounds  
will be milling with activity on the  
Friday evening before the great  
day and, even at this late stage,  
we will give a warm welcome to  
anybody ready to give a hand.

The admission charge is 1s.,  
children half-price, but members  
of the Community Association  
presenting their current card will  
be admitted free.

The Exhibition on the theme  
of "Women of Bookham" will  
portray the variety and scope of  
the interests and achievements of  
the many active ladies in this  
neighbourhood who keep this  
such a lively village. Naturally,  
as there are three very enthusi-  
astic Women's Institutes, a large  
space will be allocated to their  
joint exhibit. It is hoped that  
demonstrations of some of their  
crafts will take place at intervals  
during the afternoon. Quite a  
number of other women's organ-  
isations have agreed to participate.  
A specially interesting section will  
show the work of women artists.

A gymnastic display in the  
arena will be given by the Howard  
of Effingham School which has

won recently a number of major  
county awards in the sphere of  
physical education. It is hoped  
to provide a Punch and Judy  
show and there will be the usual  
children's corner with ponies. In  
the forecourt will be a specially  
provided static display of  
Accident Prevention. Of special  
interest to the young and to  
technically-minded parents will be  
a display of the latest military  
equipment provided by the  
Queen's Regiment, supplemented  
by demonstrations from a group  
of the Royal Engineers of some  
of the skills they have acquired in  
the course of their training.

The evening Barbecue and  
Group, so popular with all, is  
a must so far as we are concerned.  
Our experience in other years is  
that the young people within the  
grounds behave with truly adult  
decorum and we feel that they are  
entitled to their share in the  
enjoyment. If any of our neigh-  
bours are upset by the noise of  
the Group we apologise in  
advance but point out that this is  
only a one-day-in-the-year event  
and that many other villages in  
Surrey have for years organised  
annual events of much greater  
scope.

As Village Day is so much a  
family day it becomes more

*Showrooms:*

**1 DORKING ROAD  
EPSOM 3 9 0 1**



*Works:*

**18 WATERLOO ROAD  
EPSOM 5 2 5 7**

**THE FRIENDLY AGENTS**

**NEW**

**AUSTIN  
MORRIS  
TRIUMPH  
M.G  
RILEY  
RENAULT  
DISTRIBUTORS**

**CITROEN  
AREA AGENTS**

**HILLMAN**

**USED  
CARS**

**A GOOD SELECTION ALWAYS  
IN STOCK**

**PART EXCHANGES**

**LOW INTEREST**

**HIRE PURCHASE**

**PRIVATELY FINANCED**

---

**FACTORY TRAINED MECHANICS**

**CRYPTON MOTORSCOPE**

**For 'AFTER-SALES' Service**

**DRIVING LESSONS**

**ROYAL AUTOMOBILE CLUB APPROVED INSTRUCTORS**

**"NERVY PUPIL SPECIALISTS"**



obvious every year that the younger children must be catered for. Accordingly it is a pleasure to announce the attendance of Punch and Judy who will be manipulated by Mr. George Sappwell, well known in Etingham. He is one of the old school who, like his father and grandfather before him, has toured the countryside with his suitcase in his hand and a neat bundle over his shoulder. Within five minutes the bundle becomes a gaily striped tent and the suitcase is opened to reveal the character puppets, made and dressed by himself. He believes in the traditional presentation of the story which, as he points out, is mentioned in Pepys' Diary and is believed to have been brought to England from Italy. His version is based on the original plot which, he considers, should have a happy ending.

Village Week, as will be seen from the programme, incorporates a number of new features. The Victorian Music Hall should draw a big audience and it will be advisable to get tickets well in advance as the numbers will be strictly limited by the available space. The organiser is Mrs. J. Ackroyd who, as a producer for the Dramatic Society, has shown great talent and will draw on her fellow members for some of the items.

The Flower Show is being directed by the Flower Arrangement Group which, in the years of its existence, has deservedly won a

reputation for itself even at County level. Groups from all parts of Surrey are sending entries in those classes reserved for members of such groups. All local people, men or women, are invited to enter the open classes in which novices with a flair can hope for success. The first of these classes is for "Miniatures" which gives a sporting chance to anybody. Schedules will be available well in advance, but the last date for entries to be submitted is June 15th. They should be sent to Mrs. E. Dyson, Meadowside House, Meadowside, the Show Secretary.

The Square and Folk Dance Club arranged a Dance during Village Week last year and it will be remembered that this was a most enjoyable occasion. It will be even better this year with the addition of the Silver Family Folk Singers. These latter have only performed publicly for a couple of years but during that time they have travelled to many parts of England. It is because of their knowledge of the true interpretation of Canadian folk music that they have gained a deservedly wide reputation and have taken part in two festivals at Cecil Sharp House.

Finally, the Village Dance on Saturday, June 24th. Tickets for this have also to be strictly limited and many people are disappointed. We do, therefore, advise people to get their tickets early. They can be obtained from Dr. J. Sowerbutts or from Mr. W. Rombach, Vicarage Close.

## A SHORT HISTORY OF BOOKHAM

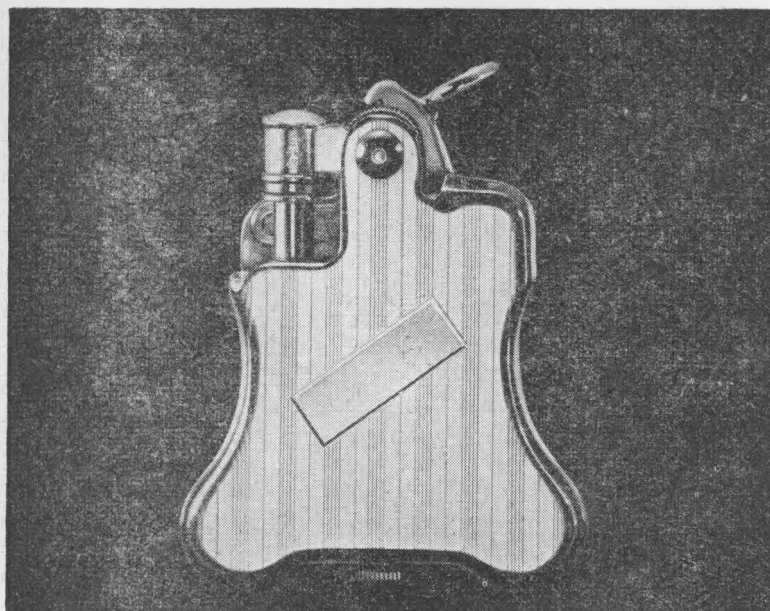
### PART II

By JOHN HARVEY, F.S.A.

Athelstan's coronation at Kingston in 925 is an historical landmark, when Surrey first appears as a district of national importance.

The famous stone at Kingston was probably an actual boundary mark, symbolising the meeting point of the four spheres of influence: Kent, Wessex, Mercia and Middlesex, Surrey, which had been the "south region" of the Middle Saxons, became a part of Wessex by the end of the 7th Century, and for this reason Bookham was historically within the diocese of Winchester.

Bookham was one of a deliberately laid-out system of parishes which follow the northern slopes of the Downs from Croydon to Guildford, taking advantage of the several sorts of land. Towards the high, southern end were beech-woods which gave Bookham its name: the dwelling at the beech trees; at the opposite end, separated from the River Mole by rich water-meadows, ran a forest of oak growing on the London clay. In between lay downland, much of it already ploughed, well drained by the chalk subsoil. An outcrop of Thanet sand marks the northern edge of this downland, and along this ran the accommodation road which linked village to village (the Lower Road. The main settle-



**It all started with the Banjo (as illustrated) in 1927**  
 This was the first automatic lighter the world had ever seen. It made 'lighting up' a good deal easier. It also led to the development of our Varaflame gas lighter, the most advanced the world has known. We've been in the making-it-easier business ever since. Not just with lighters. With anything that can stand improving, revamping or just plain old-fashioned inventing.

**Today, Ronson does a lot more than light cigarettes.**  
 We make top-rated electric razors for men and for women . . . a great range of hairdryers . . . an automatic toothbrush . . . 'Oily Bird' household oil. And lots of other interesting things.

**'Who knows where it will end?'** After all, Ronson started out with one modest ambition: to improve on the match.



RONSON PRODUCTS LIMITED, LEATHERHEAD, SURREY

Make a note to phone or call . . .

**V. I. P.**

**OFFICE ACCESSORIES CO.**

for TYPEWRITERS and ALL  
 OFFICE EQUIPMENT

Stockists for

Quality . . .

**Carbons ' Ribbons  
 Duplicating Supplies  
 Photographic Supplies**

**BURPHAM HOUSE  
 HIGH STREET  
 BOOKHAM**

**Bookham 4848**

Nothing too much trouble  
 You name it, we get it

**DRY CLEANERS !**

**Tel. Bookham 4815**

—●—  
**3-DAY SERVICE  
 COLLECTION AND  
 DELIVERY**

—●—  
**TAILORING REPAIRS**

also

**HOUSEHOLD AND  
 CARPET CLEANING**

—●—  
**D. & A. H. BARKHAM**

**39 CRABTREE LANE  
 GREAT BOOKHAM**

ment (Great Bookham High Street) was laid out on a gravel bed which had silted up in Bookham Dean (i.e. valley). Wells sunk in the chalk provided a good water supply. The regular plots on each side of the straight street, and the corner site allocated to the church, show that Bookham is the outcome of deliberate town planning.

The earliest surviving written description of Bookham is that made by the surveyors of William the Conqueror, who about 1066, compiled what has ever since been known as the Domesday Book. The survey was an assessment for purposes of taxation, and omits much that we should like to know. But its precise particulars can be interpreted in the light of later history, and of the topography of the parish, or rather parishes, for it is in Domesday that the distinction between the two Bookhams first appears.

Among the properties of Chertsey Abbey is numbered "Bookham," undoubtedly the later Manor of Great Bookham. In the time of Edward the Confessor (i.e. in 1065) this had been valued at 26 hides; but 20 years later it was reckoned at only 13 hides. In theory the township had been reckoned to consist of 26 free families and their dependants, each family supported on the produce of a hide of land, usually about 120 acres. On this assumption the area of the township would have been 3,120 acres; and in actual fact the area of the later

Manor was very little more than this, about 3,170 acres. This remarkably close correspondence between theory and fact may be coincidence, or it may indicate (as is indeed suggested by the layout of the parishes and of the village streets and plots) that a serious land-survey had already taken place in Saxon times.

The arable land of Great Bookham was sufficient for 19 ploughs, of which one was in demesne (i.e. worked directly for the Abbey), while 32 villeins and four bordars employed 18 ploughs. The villeins were not slaves, but tenants by local custom "bound to the soil;" each villein and his family would usually have arable land amounting to about 30 acres (a virgate, or yardland, one quarter of a hide), together with rights of common; the bordars were cottagers with small quantities of land, perhaps from three to five acres. There were also three serfs, who were actually bondmen of the abbot. The only inhabitant mentioned by name is one Gurfrey, who held one hide in which he had a plough; he was a freeholder, unlike the villeins. The survey also mentions the existence of a church, of a mill (no doubt Slyfield Mill) worth 10s., and six acres of meadow, the valuable water-meadow alongside the Mole. The woodlands were worth 80 hogs, and another 30 hogs would be yielded from the herbage; these numbers of swine were those paid to the Abbot by the villeins for the right to run their

pigs in the woodlands and over the fields after harvest. The usual rate of payment was one in seven which would imply that the wastes of Bookham fed nearly 800 pigs. The survey concludes with the valuation of the manor: £16 in the time of King Edward, and, in 1086, £15.

Separately among the lands of laymen, another "Bocheham," Little Bookham, formed part of the fee of William de Braiose, who had sublet the manor to one Halsard; in the time of Earl Harold it had been held by Godtovi, and it was then assessed at five hides; at Domesday for only two hides. The land was sufficient for three ploughs, of which one was in demesne, working the "home farm" for Halsard. Three villeins and four borders had one plough between them; this total of only two ploughs implies that the available land was not fully under cultivation. There were four acres

## L. S. HALL

1 GROVE CORNER  
BOOKHAM

Tel. Bookham 3140

—\*—  
Boot and Shoe  
Repairs and Retail

—\*—  
GENTS' TAILOR  
Repairs and Alterations  
Customers' Material made up  
DRY CLEANING

# **RUNMORE GARAGE**

(West Surrey Motors Ltd.)

Local Agents for

**MORRIS :: HILLMAN :: HUMBER :: SUNBEAM**

**COMMER :: MORRIS COMMERCIAL**

**ANY MAKE OF NEW CAR SUPPLIED**

## ***SALES and SERVICE***

**INSURANCE      H.P. FACILITIES**

**Fitted with the most modern equipment our Workshop offers YOU the service**

**YOUR CAR deserves——THE BEST**

**QUALITY USED CARS      BEAM SETTING      WHEEL BALANCING**

**ACCIDENT REPAIRS      REPAINTING, ETC., ETC.**

**TYRE :: BATTERY :: ACCESSORY SPECIALISTS**

**“DO-IT-YOURSELF” SHOP**

## **RUNMORE GARAGE**

**Guildford Road**

**Little Bookham**

**Telephone: BOOKHAM 230**

of meadow, evidently at the lower end of the parish, and the lord received 11 hogs from the pannage of the woods and the herbage. In King Edward's time the manor had been worth 50s., but this had increased to 60s., by the time of the survey. The discrepancy between a lowered assessment and increased valuation is noteworthy; the former, according to J. H. Round, indicated a temporary reduction in liability conceded by the Conqueror to his companions; the latter seems to imply that Halsard's administration of the manor was progressive.

#### ROUNDABOUT

**Friends of Leatherhead Hospital**, Bookham Branch, is an all-women's group and perhaps this is why it is so adept at money-raising functions. Its secretary, Mrs. Dames, wishes to say that

newcomers to the village and others will always be welcomed to its functions. It is by no means a "closed shop."

Bookham participated with the other Ward branches in the opening in April in the Hospital of a daily canteen for the use of visitors and out-patients. This is specially appreciated by the many elderly patients who attend the hospital for treatment.

**Bookham and District Riding Club** has recently completed its first year. Mrs. Joan Hewett is the Chairman and associated with her is Mrs. Hallet, of the Vale Lodge Riding School, Leatherhead, Miss Dovey, of the Kennel Road Riding School, well known in the district for her participation in local charitable functions, and Miss Cooper, of Effingham. Already there is an enrolment this year of over 70

members and this will increase as the better weather comes. The latest event was a Hunter Trial on May 7th, but all kinds of equestrian activities are organised. Throughout the spring and the summer regular evening instructional rides are organised on Wednesdays, and these are held from each of the four centres in turn.

**Much exhibited Bookham Artist.** Housewife, Mrs. Edna Bizon, who lives in the Garstons, is entering pictures in a number of forthcoming exhibitions, including that of the Women Artists Exhibition at the R.I., Piccadilly and the Royal Society of British Artists. It will be remembered that she had a painting selected for hanging in the Eleventh International Amateur Art Festival. For this only 600 pictures were selected from an entry of 2,500: Mrs. Bizon's was of deer grazing with a background of trees at Chessington Zoo. She freely admits that she is a traditionalist and has no desire to participate in the many new cults which go to make the present vogue.

She followed a four-year Art Course, first at St. Martin's and later at the Camberwell School of Art from which emerged some of the present outstanding painters in the Art world. Her husband, too, is an artist and is a lecturer in Interior Decoration.

We hope that some of Mrs. Bizon's work will appear along with that of other Bookham

*Britain's only Hamster Farm . Known throughout the World.*

## Parslow's Hamster Farm

(Percy W. Parslow, President National Hamster Council,  
Judge to N.H.C.)

**COMMONSIDE, GREAT BOOKHAM**

Tel. BOOKHAM 4216

Holiday Homes for Pets (No Dogs or Cats)

**RING FOR APPOINTMENT TO VIEW**

Approach from Station: Turn left. 150 yards on, turn left over Common, take centre track to Commonsides, turn right.  
By car: via Kennel Lane and Glade, turn sharp left where road forks.

***A Reverent and Comprehensive Service***

The need for careful funeral arrangements comes, as a rule, very suddenly and it is then that you require not only personal advice, but immediate attention to your wishes . . . With complete confidence you can entrust every detail of the arrangements in accordance with these wishes. . . .

**HAWKINS & SONS**

**Funeral and Cremation Service**

*Private Chapels of Rest*

**2 HIGHLANDS ROAD**

(Next to Parish Church)

**LEATHERHEAD**

*Day and Night Service:*

**Telephone: Leatherhead 2435      Bookham 3242**



artists in the Village Day Exhibition.

Art is a subject in which many people in this area are interested. Such is the pressure on the Epsom School of Art that many of the amateur classes have had to be taken out of the College, but evening institutes out to Epsom and Guildford have built up an increasing number of classes to meet the very heavy demand and these are held in the daytime as well as in the evening.

**Eastwick Park Cricket Club** are honoured to have been approached this year to be hosts to "The Lords Taverners" on Sunday, May 28th, at Effingham Playing Fields. It is felt that the appearance of the many stage, television, film and sporting personalities who are always in attendance on "Taverners" occasions will again this year attract a large crowd. It is hoped that Harry Secombe, 1967 President of the Taverners, will be added to the considerable list of famous people who have graced the Club's wicket at Effingham in the past three years, among them being Tommy Steele, Rohan Khanai, Ken Barrington, David Frost, Roy Kinear, Peter Murray and Leslie Crowther.

The Club know that their experience of organising such events during the past three years, together with the official recognition of the "Taverners," will mean that spectators will be offered an even more enjoyable day than

ever before. It has been estimated that in past years the crowds have been in the region of 5,000 people. There is ample room for car parking, refreshments and licensed bar facilities are available. An excellent view of the proceedings can be obtained.

Another date to be noted is July 23rd when the Club has a fixture with a renowned team of personalities in aid of a testimonial fund instituted by the Surrey County Cricket Club for Ron Tindall and David Sydenham, both of whom have rendered such valuable services to cricket.

Mr. B. J. Aspital, secretary, wishes to emphasise that in its seventh season the Eastwick Park Cricket Club, through its arrangements with the Effingham Playing Fields Committee, is able to offer most attractive facilities both on and off the field for both players and supporters.—G.D.

**1967 Top Accountant.** Congratulations to Mr. Christopher May, of Guildford Road, who obtained first place in the country in the final examination of the Institute of Chartered Accountants and so becomes an Associate of the Institute. His father is a Fellow of the Chartered Institute of Accountants but this award is only given after five years' practice in the profession.

Mr. Christopher May was a pupil of Dorking County Grammar School from 1951 to 1959 after his parents had taken up

residence in Bookham. He obtained a State Scholarship to Corpus Christi College, Cambridge, where he graduated in Economics.

His younger sister is a graduate in French of London University, and is now married and lives near Liverpool. The family is interested in music and his father is organist at St. Nicolas Church. His mother is press officer of the Fetcham Evening W.I.

**Hairdressing a Profession and an Art.** Bookham hairdressers encourage their assistants to follow up a lengthy period of technical training and keep abreast of the rapidly changing techniques of an expanding craft.

Mr. Gerald Amos, of the High Street establishment, is justifiably proud of the achievements of his young ladies. They are all members of the New Thames Valley Academy which they attend once a week. They participate in a carefully graded curriculum and enter the various competitions. Some months ago 19-years-old Christine Harris won the cup for first place in the annual competition for junior students. There were 29 stylists competing. Miss Linda Clack of the same salon took fourth place. Since that time Christine has won an award for third place in a comparable competition. She and Linda are now preparing to enter the more advanced open classes. Working with them is Miss Gillian Freeman, of Mead Crescent, who is now ready to enter the next junior

(Continued on Page 18)

# TO ALL ROAD USERS

## ARE YOU UP-TO-DATE?

Does *every* Road Sign mean something to you? Or are you too lazy to learn and rather trust to luck or to the know-how of the other person to avoid that crash?

## STOP ACCIDENTS

BE WITH IT AND LEARN THE NEW TRAFFIC SIGNS *NOW*. KNOWLEDGE BRINGS PEACE OF MIND TO YOU AND OTHERS.

Booklet, illustrated in colour, from any stationer, price 6d, or free from:

LEATHERHEAD ACCIDENT PREVENTION  
COUNCIL

RED HOUSE ANNEXE  
BULL HILL, LEATHERHEAD.

## Jack & Jill Nursery

for

CHILDREN AGED 2-5

At 214a LOWER ROAD

GREAT BOOKHAM

(registered and approved by  
Surrey C.C.)

Established 1948

Mornings 9.15—12.15 and  
Monday & Thursday 2—4.30 p.m.

Apply to Mrs. E. SIMMONDS  
TEL. BOOKHAM 4367

CASSELDEN'S

NEETANDKWIK

Shoe Repair Service

Long Soling a Speciality

Ladies' Fashion Shoes repaired  
on makers' lasts

Collection and delivery by  
arrangement.

22 CRABTREE LANE  
BOOKHAM

Tel. 2484

## HERRIOT ASSOCIATES LTD.

Incorporating D. C. P. West & Company (Est. 1891) and associated with  
Walter Herriot and Company Ltd., of London  
*Incorporated Insurance Brokers*

- (1) are able to arrange your insurances with any Insurance Company you wish. Active accounts with over 100 Companies and Lloyds groups are in existence.
- (2) are prepared to discuss and to advise you regarding the most suitable type of insurance for your needs, and as to which Insurance Company to choose.
- (3) have a specialist section dealing with Life and Annuities, Pension Schemes and Estate Duty problems.
- (4) can assist you in making house purchase and mortgage arrangements.
- (5) act as Agents for the BUPA and London Association for Hospital Services, various Unit Trusts (whether or not linked to insurance plans) and as investment agents for several Building Societies.

If you think these services might be of value to you, please do not hesitate to ask. No charge is normally made for advice, completing arrangements, or subsequent service in connection with claims, etc.

Previously at 43 BRIDGE STREET, LEATHERHEAD  
New and old clients and friends are welcome to visit the new offices at

**9 THE STREET . ASHTEAD**

Tel. Ashtead 6441/2

# E. E. DUNKEY

LIMITED

4 Grove Corner  
BOOKHAM

Tel: Bookham 3293



**PHOTOGRAPHIC EQUIPMENT**



*Dispensing Chemist*

## GIFTS

*all the  
year round*

o o o o o

*Agents for*

**DOROTHY GRAY**

**YARDLEY**

**REVLON**

**INNOXA**

**HARTNELL**

**OLD SPICE**

*and other  
proprietary brands*

## R. W. SCOTT & SON

**Builders  
Decorators  
Undertakers**

**Works:**

Guildford Road, Effingham.

Tel.: Bookham 2166

**Private Address:**

6 Norwood Road,  
Effingham, Surrey.

5 minutes from Bookham Station

BED AND BREAKFAST OR WEEKLY TERMS

## *Bookham Grange Hotel*



(BOOKHAM GRANGE HOTELS LTD.)

### BOOKHAM COMMON

LUNCHEES 12.30—2 DINNER 7.30—9.30

SUPPER LICENCE . GOOD FOOD

*Ballroom available for Wedding  
Receptions, Private Parties, Dinners, etc.*

*We Specialise in Outside Catering at  
Local Halls or Private Parties*

Resident Director: W. H. J. Sale

Phone: Bookham 2742/3

## David Fuller

5 CHURCH ROAD

BOOKHAM

Tel. Bookham 4710

*Men's Outfitters*

*Ladies' Gent's Children's Shoes*

*Carpet Planners and Fitters*

TUF, EATON, DURAFLEX, PIRELLI, ETC.

# P. & M. MITCHELL

DOMESTIC HARDWARE & IRONMONGERY

PYREX - SWAN  
PRESTIGE - SKYLINE  
PLASTIC  
HOUSEWARES etc

TOOLS - PAINTS  
WALLPAPERS  
GARDEN SUNDRIES  
KEY CUTTING

**Personal Attention**  
**Always**

45 CHURCH ROAD, GREAT BOOKHAM

Phone: BOOKHAM 3824

Telephone  
Bookham 3013

## Cynthia's

Ladies', Children's & Baby Wear  
Sirdar, Wendy & Studley Wools  
Hosiery, Gloves & Haberdashery

5 GROVE CORNER  
GREAT BOOKHAM

## CAR HIRE

CHAUFFEUR DRIVEN  
AND SELF DRIVE

**Lock and  
Gallagher**

Cars available for all  
occasions

WOODHATCH  
GILMAIS  
BOOKHAM  
Phone 3 2 4 2

Wines to suit all tastes at prices to suit all pockets

## THE BECKLEY OFF-LICENCE

(GILBERT REEVES)

1-3 NEW PARADE, LEATHERHEAD ROAD  
GREAT BOOKHAM

Telephone 5575

*Drinks Supplied for Weddings and Parties on Sale or Return*

Glasses Loaned Free



*Free Delivery in all Areas*

Academy competition. Gillian has poise as well as skill; during her holidays last summer she won the weekly heat for Miss Mannequin at Pontun's Chalet Hotel, Torquay.

The girls get great encouragement from Mr. Gerald Amos who is National President of the Academy Directorate of Great Britain. There are 15 Academies in the country. He takes a special interest in the New Thames Valley Academy, of which he is a Past President, and attends Surbiton every week to assist in the administration of its very comprehensive activities.

The Spinney School has closed after more than 30 years' service to the local community. It was opened in the early 1930s by Miss Dorothy and Miss Eleanor Joce and provided a progressive and balanced education for girls up to 12 and younger boys. The children of Dr. Barnes Wallis started their education under the Misses Joce and they, and many others scattered throughout the world, keep in touch with Miss D. Joce whom they regard with great affection.

When Miss Joan Lindsay took over the school 17 years ago changes in the curriculum on Froebel lines were introduced. Numbers increased, and by the beginning of this year had reached 150 pupils between the ages of three and a half and 11. Health reasons and the economic problems of running so large a school forced Miss Lindsay to close the

school. It is good to know that the loss to Bookham is not total. Miss Lindsay's talents and experience will still be used in the small nursery school she plans to open at Merrylands Farm.

**Open Air Theatre.** Shakespeare's "Othello" has been chosen for production at the Polesden Lacey Open Air Theatre on July 19th, 20th, 21st and 22nd. Tickets are going very well. The Box Office is, as usual, under the direction of Mrs. B. Oidershaw, Bookham 2241, and is open 10 a.m. to 7 p.m. Monday to Friday, 10 a.m. to 1 p.m. Saturday.

**Bookham Winemakers' Successes.** Although only in its second year, Bookham Winemakers' Club can be justifiably proud of the competition achievements of some of its members.

For the second year in succession, members have gained awards in National Competitions. Last year, Janet Shapland, the Club secretary, was awarded a third place in her class for Tea Wine.

This year, at the ninth Amateur Winemakers' National Conference and Show held at Butlins in April, Arthur Hedges gained two second places and a Highly Commended with his Apple, Blackberry and Maize Wine and June Lancaster a third with her Peach Wine. In addition, Janet Shapland gained a Very Highly Commended for a savoury dish prepared or cooked with wine.

Doug Lancaster, the Club

Chairman, a National Judge, assisted for the second year in succession with the stupendous task of judging. In all there was a record entry of 3,324, which number was half as many again as expected—an average of nearly 100 in each class.

The number of winemakers and families who attended the three-day conference was in the region of 1,000.

Joe Hale, the Club's popular "shopkeeper," acted as a steward.—A.W.H.

**L.U.D.C.** The B.C.A. Over Sixties' Committee and Club wish to put on record their appreciation of the grant of £40 by the Leatherhead Urban District Council towards the rent of the Barn Hall for their Tuesday meetings.

**The Stoolball Club** has now started its summer season and it is hoped that it will be as successful as last year's when out of 46 games played 38 were won and only six lost. Four cups were gained, three being at the annual tournament.

Stoodball is catching on among the juniors and a team has been set up to cater for them. Any juniors over 11 years of age are invited to get in touch with the secretary, Mrs. M. Francis, if they are interested in joining.

**The Howard of Effingham School** has reason to be proud of its girl gymnasts. At the Surrey Schools Gymnastic Championship for Girls the Effingham team was placed first in the junior age



Come Co-operative Shopping . . .

£ 70,000

paid to our members in dividend and interest last year

- \* Highly competitive prices
- \* Free delivery service
- \* Over 2,300 grocery lines in stock
- \* Customers' parking facilities
- \* Open until 6.30 p.m. Fridays for late shopping

**Guildford & District Co-operative Soc. Ltd.**

LEATHERHEAD ROAD, GREAT BOOKHAM

Tel. Bookham 218

**CHARRINGTONS**

for

**Solid Fuels**

and

**Mobil Fuel Oils**

Free advice given on all aspects of central heating

**15 HIGH STREET**

**GREAT BOOKHAM :: SURREY**

Tel. Bookham 4049 and 2655

MRS. N. C. WOLFF'S

**LEATHERHEAD**

**SECRETARIAL SCHOOL**

**28 BRIDGE STREET**

**LEATHERHEAD**

Phone: Leatherhead 2401

**A COMPLETE**

**SECRETARIAL**

**TRAINING**

INDIVIDUAL TUITION

*Duplicating, Typewriting  
and all Secretarial Services*

group (under 14) and comprised Elaine Allen, Jane Baker, Pauline Easton, Paula Whiteman. Elaine individually was placed first out of 185 competitors.

Elaine and Jane were chosen for the under 13 trampoline team in the Surrey v. Kent match.

The school must also be congratulated on the fine performance of "Attica," a Programme of Mime, Speech and Play Scenes, devised to give an opportunity for the participation in some part of the production of the maximum number of pupils. Commenting on school drama to the newly-formed Surrey Schools Drama Association of which he is secretary, Mr. S. I. A. Dancer, Head of the English Department at the school, said that it was important to involve as many pupils as possible in a school production. Where every child in the school is a member of a dramatic society the problem of finding suitable plays, he said, became almost insurmountable. He suggested that dramatists might find a field for their talents in this direction.

**Obituary.** Mr. A. Longhurst, who died on January 28th, aged 77, was one of the few remaining fine old village personalities. He had lived in Bookham all his life and had many stories to tell of what it was like before development came in, slowly at first after the First World War and then much accelerated after the Second War. The roads in

those days were mostly unlighted—the Park, Eastwick Drive and the roads to the south of the Leatherhead Road, which seem to us long established, were at that time just lanes or tracks through fields. He knew the Old Barn Hall site when it was fields fenced from the road on which stood two or three ancient barns and, outside the fence, a pool of quite considerable dimensions. He watched the first barn within the fence moved on rollers to the present Braithwaites' site and the barn behind transformed into a hall and given for the use of the village by the late Mr. Byrd. This is why he retained a vivid interest in the present Barn Hall and was specially pleased to see the Grounds put in good order. He lent some of his equipment for this purpose and his wheelbarrow and roller have now been transferred to Community Association custody. This interest of his and his love of growing things impelled the Association to the decision to plant snowdrops near the outer wall rather than send a wreath to his funeral.

"Old Alf," as he was affectionately known was a gardener and the soil was in his blood. On the day he went into hospital, where he died within the hour, he had given attention to his garden. For many years he kept a daily diary in which he entered comments on the weather, lists of seeds he had planted and other horticultural details. As we

all know, his front garden was a joy to look at and his flowers and seeds were of high quality. Besides his attachment to the land he also showed a sturdy independence, characteristics which made him say no to the developers who wanted to acquire his grounds when Fife Close was built.

He was always keenly interested in sport. He made the bowling green in the Dorking Road Recreation Ground and his love of this game was only superseded in his middle years by golf for which he had many cherished trophies. Perhaps he was the last one to remember the decrepit tin hut behind the High Street which in the days of the late Mrs. Christie was a boys' club where the local lads developed their interests and took evening studies.

It was no mere coincidence that when the "Daily Mail" was taking pictures of Bookham two years ago one of the photographs was of Mr. Alfred Longhurst, wearing his distinctive summer straw hat, looking over his garden gate towards the Old Barn Hall. So it is that we shall remember him.

# Howard Weale

Bookham's Family Grocer since 1870  
LITTLE BOOKHAM STREET

Tel. Bookham 5 2 4 4

●  
*SELF-SERVICE AND DELIVERIES*  
●

No Parking Problems

*For the Best Selection  
of  
PHOTOGRAPHS  
of your  
WEDDING*

Phone BOOKHAM 2748

—  
A personal service from

**J. C. FULLER**  
6 DAWNAY ROAD  
BOOKHAM

## G. WALES

*Timber Merchants*

Bookham 3272 & 4596

~~~~~  
Imported Softwoods sawn  
and prepared to order

Logs

Larch Poles for Pergolas

Interwoven Fencing

Panels and Posts

Pea and Bean Sticks

Trees Topped and Lopped

INTERIOR FURNISHERS

## ambrose

*We Specialise in . . .*

FITTED CARPETS

FABRICS, FURNITURE

FIRST-CLASS WORKMANSHIP WITH

COMPETITIVE PRICES

103 THE STREET, FETCHAM (Leatherhead 2118)  
PARADE COURT, OCKHAM ROAD SOUTH, E. HORSLEY  
(E. Horsley 3790)

### B.C.A. Officers and Clubs

**President:** V. L. Austin, O.B.E.  
**Hon. Sec.:** Mrs. E. Harrison, 61 Eastwick Drive, Bookham 5702.  
**Hon. Treasurer:** Mr. A. G. Medway, 35 The Garstons, Bookham 4967.  
**Chairman:** Mr. V. B. Stockwell, 22 The Park, Bookham 3133.  
**Barn Hall Manager:** A. M. Marson, 94 Kingston Road, Leatherhead 3053.  
**Membership Sec.:** Mrs. B. Oldershaw, 99 Little Bookham Street, Bookham 2241.  
**Advertisements:** H. B. Atkinson, 3 Park View, Bookham 2933.  
**Barn Hall Bookings:** Mrs. C. B. Medway, 35 The Garston, Bookham 4967.  
**Barn Hall Club:** Miss P. Barfield, Merrilees, Maddox Lane.  
**Camera Club:** K. H. Williamson, 4 Vincent Close, Fetcham, Bookham 4919.  
**Gramophone Club:** A. E. Baker, 81 Eastwick Drive  
**Old Time Dancers:** R. H. Pimm, 27 The Garstons, Bookham 4196.  
**Over Sixties:** Mrs. T. Weston, 50 Keswick Road, Bookham 5706.  
**Scottish Dancers:** G. R. Marshall, 63 Eastwick Drive, Bookham 2096.  
**Dramatic Society:** Mrs. A. Lawrance, 52 Strathcona Avenue, Bookham 4532.  
**Flower Arrangement Group:** Mrs. S. McLeod, 11 Allen Road, Bookham 4809.  
**Youth Club:** J. Stemp, 58 Whiteway, Bookham 4143.

### BOOKHAM ORGANISATIONS (Affiliated to B.C.A.)

**Bookham Boys' Club:** K. A. Vincent, 1 Sole Farm Avenue.  
**Bookham Bowling Club:** C. Flowers, Shaldon, Guildford Road, Bookham 4807.  
**British Legion, Effingham and Bookham Branch:** M. S. Pickering, Standardhill, Guildford Road, Effing.

**British Legion, Women's Section:** Mrs. L. A. Pickering, Standardhill, Effingham, Bookham 5581.

**Bookham Cricket Club:** J. Hubbard, 45 Sole Farm Road, Book. 3874.

**Cross Daggers Cricket Club:** R. Lovegrove, 9 Humphrey Close, Fetcham, Bookham 3984.

**Eastwick Park Cricket Club:** B. Aspital, 65 Hazel Way, Fetcham, Bookham 4859.

**Choral Society:** L. S. Hughes, 2 Blackthorne Road, Bookham 2785.

**Conservative Association, Gt. Bookham Branch:** J. E. Farrier, 24 The Garstons, Bookham 3986.

**Conservative Association, Little Bookham:** M. C. Pope, Little Oaks, Childs Hall Road, Bookham 4018.

**Labour Party, Bookham Ward:** E. H. Churcher, 6 Twelve Acre Close, Bookham 3949.

**Liberal Association, Bookham Branch:** W. B. White, 46 Sole Farm Avenue, Bookham 4225.

**Garden Society:** R. C. Wing, 20 Gilma's, Bookham 3687.

**Eastwick Allotments and Gardens Association:** C. B. Martin, Omira, Leatherhead Road.

**Bowls Section—Gillett Sports:** C. A. Upton, Bybrook, Sole Farm Road, Bookham 3279.

**Bookham Football Club:** D. Oliver, 27 Middlemead Road, Book. 4236.

**Eastwick Parent and Teacher Association:** K. C. Lynn, 32 Hazel Way, Fetcham. Bookham 3875.

**Girl Guides, 3rd Company:** Mrs. L. Mills, 38 Strathcona Avenue, Bookham 3602.

**Local Guide Association:** Mrs. R. A. Connellan, 28 Mead Crescent, Bookham 3930.

**1st Bookham Scouts:** G. V. Child, 9 Sole Farm Road, Bookham 2147.

**2nd Bookham Scouts:** E. Tarrington, 4 Dowlans Close, Bookham 2960.

**3rd Bookham Scouts:** T. R. Holdstock, 41 Crabtree Lane, Bookham 4743.

**Bookham Girls' Life Brigade:** Miss T. E. Foster, Riverside, Pixham Lane, Dorking.

**Boys' Brigade:** L. S. Kay, 13 Nutcroft Grove, Fetcham, Leatherhead 4302.

**Catholic Youth Club:** Mr. D. Lynch, 46 Middlemead Road.

**Catholic Women's League:** Mrs. Lacey-Smith, Dintham Lane, Effingham, East Horsley 3256.

**Bookham Red Cross Cadet Units:** Mrs. George, Wixwood, Dirtham Lane, Effingham.

**League of Friends, Leatherhead Hospital:** Mrs. Dames, 23 Barn Meadow Lane, Bookham 4074.

**Leatherhead and District National Savings Group, Bookham Ward:** Mrs. D. Leonard, 25 Allen Road, Bookham 3432.

**National Trust, Bookham Commons Committee:** Dr. J. G. Sowerbutts, Riddlesdale, Church Road, Bookham 3308.

**Polesden Lacey Camping Club:** Mrs. M. White, 26 High Street, Collier's Wood, S.W.19.

**Women's Institute (Afternoon):** Mrs. Smith, 5 The Lorne, Bookham 3523.

**Gt. Bookham W.I. (Evening):** Mrs. D. Edwards, 60 Kennel Lane, Fetcham, Bookham 5409.

**Little Bookham W.I. (Evening):** Mrs. E. Hedges, 3 The Lorne, Bookham 3434.

**Rifle Club:** O. J. Rattenbury, 17 Dorking Road, Bookham 3308.

**Bookham Square and Folk Dance Club:** Mrs. Thomas, 49 The Garstons, Bookham 4607.

**Bookham Stoolball Club:** Mrs. M. Francis, 38 Newenham Road, Bookham 3075.

**Bookham Winemakers Club:** Mrs. Shapland, 60 Eastwick Drive, Bookham 2674.

**N.S.P.C.C.:** Mrs. J. Dakin, 8 Sole Farm Road, Bookham 4225.

# CRIPPS

Fishmonger and Poulterer

NEW PARADE  
CHURCH ROAD,  
BOOKHAM

Telephone: Bookham 4022

## ***FISH at its best.***

FRESH SUPPLIES OF QUALITY FISH DAILY  
ALSO FINE SELECTION OF FROZEN FOODS  
HYGIENE AND CLEANLINESS ASSURED

*Home-made Cakes  
Anniversary Cakes  
made to order*

## THE WALNUT TREE

*Morning Coffee  
Lunch . Afternoon Tea*

\*

5 CHURCH ROAD  
(Opposite the Church)  
GREAT BOOKHAM  
Tel. Bookham 3606

\*

Closed Sunday and Monday

## Home Counties Dairies



Channel Island - Pasteurised  
Homogenised - Sterilised  
Flavoured Milk and  
Fresh Cream Delivered Daily

HOME FARM, Effingham  
Telephone: Bookham 253

68, Church Road,  
Gt. Bookham  
Telephone: Bookham 345

## LEATHERHEAD THEATRE CLUB

High Street :: Leatherhead  
Telephone: Leatherhead 2852

The Leatherhead Repertory Company presents first-class plays with fully professional casts. Season from August to May. Each play runs for three weeks.

*For times of performances and prices see local press.  
Special terms for parties of ten or over.*

Tickets may be purchased only by members of the Theatre Club—  
Annual Subscription 2/6.

The Leatherhead Green Room Club is fully licensed and provides meals before and after the show. Details of membership from the Club Manager.

Telephone: Leatherhead 4223

## P. J. CAMP

- Stationery, Printing
- Greetings Cards,  
Fancy Goods, Books
- Toys, Tobacco and  
Confectionery

Gt. Bookham Post Office  
CHURCH ROAD  
Phone Bookham 11

## C. CRABTREE (Chemists) LTD.

(C. CRABTREE, M.P.S., F.B.O.A. . L. G. CRABTREE)

Chemists and Opticians

Agents for . . . .

KODAK AND ILFORD CAMERAS & ACCESSORIES

High-Class Toilet Preparations:

COTY . YARDLEY . REVLON . LENTHERIC . ETC.

. . . Daily Deliveries

### BOOKHAM PHARMACY

9 HIGH STREET . GREAT BOOKHAM

(Tel. Bookham 2067)

and

1 THE STREET, EFFINGHAM (Tel. Bookham 4033)

## VICTORIA FURNISHINGS

HIGH STREET

BOOKHAM

Telephone 2923

●  
*Carpets Supplied and Fitted  
Curtains and Loose Covers  
Divan Beds and Bedding  
All Soft Furnishings  
Sunway Blinds  
Occasional Furniture*

## Pianos

For the Right "SOUND OF MUSIC"

TRY

## J. E. VINER

Pianoforte Tuner and Repairer  
(Late of John Broadwood & Sons.  
Ltd., W.1.)

who visits the district regularly

Please write to:

7 Riverholme Drive

West Ewell

or Tel. EWELL 5904

Before 9 a.m. - After 6.30 p.m.

## Elizabeth's

Harrington Baby and  
Children's Wear

Dresses by Berkertex,

David Barnes and other leading  
Fashion Houses

Skirts and Slacks by Gor-Ray,  
Slimma, etc.

Jumpers and Cardigans by Jaeger,  
Bear Brand, Eastex, Deabrae

Lingerie by Leading Makers  
Nylons by Bear Brand, Charnos,

Glamour Girl, Plaza, Dent  
Foundations by Exquisite,  
Lovable, Twilfit, Berlei

26 CHURCH ROAD

GREAT BOOKHAM

Tel. Bookham 3307



# LONGHURST UNDERTAKERS

LTD

86 High Street, Epsom

Phone: EPSOM 23548

C. J. FOX  
HIGH STREET  
GT. BOOKHAM

BUTCHERS & FARMERS

Famous for  
HOME PRODUCED MEAT  
OF GREAT QUALITY

... Deliveries ...  
Phone 210

# H. BRACKENBURY & SON

YOUR HIGH STREET IRONMONGERS

"WHERE COURTESY COUNTS"

17 HIGH STREET, GREAT BOOKHAM

Telephone:  
BOOKHAM 329

# R. J. CLATWORTHY LIMITED

Radio, Television and  
Electrical Engineers

●  
Agents for all makes of  
RADIO TELEVISION  
WASHING MACHINES  
and REFRIGERATORS

ALL RECORDS  
SUPPLIED

●  
19 High St., Gt. Bookham  
BOOKHAM 5329

**DOUGLAS**

**& Company**

F.A.L.P.A.

*Incorporated*

**AUCTIONEERS,  
ESTATE AGENTS,  
VALUERS & SURVEYORS**

**8 HIGH STREET,  
LEATHERHEAD**

Telephone 4136/7

*Also at*

Ashtead, Epsom, Ewell  
and Worcester Park

**DOUGLAS**

**& Company**

F.A.L.P.A.

ESTABLISHED 1856

**C. BRIDGER & SONS**

(Douglas N. Cloutte, F.R.I.C.S., F.A.I.)  
Chartered Surveyor

(John E. Marchington, F.V.I.)

(Clive A. Stanford, F.R.I.C.S., F.A.I.)  
Chartered Surveyor

(Michael T. Hind, F.A.L.P.A.)

•  
**Consulting Surveyors  
Auctioneers, Estate Agents  
and Valuers**

•  
**18 CHURCH ROAD, GT. BOOKHAM**

Tel.: Bookham 2045/6

•

*Associated Offices also at:*

Leatherhead . Ashtead . Epsom . Tolworth . Guildford  
Farnham . Worcester Park . Woking . Godalming  
Ash Vale . Ewell . Haslemere . Horsham

Architectural Department: Ashtead Office  
(J. C. Scrivener, A.R.I.C.S., Chartered Surveyor)